



Can I request for samples?

Yes, you can request for the samples of Doozer product free of charge completely. First of all, let us know what you need by following contact for more helps.

How can get any answers and solutions? How can I contact ?

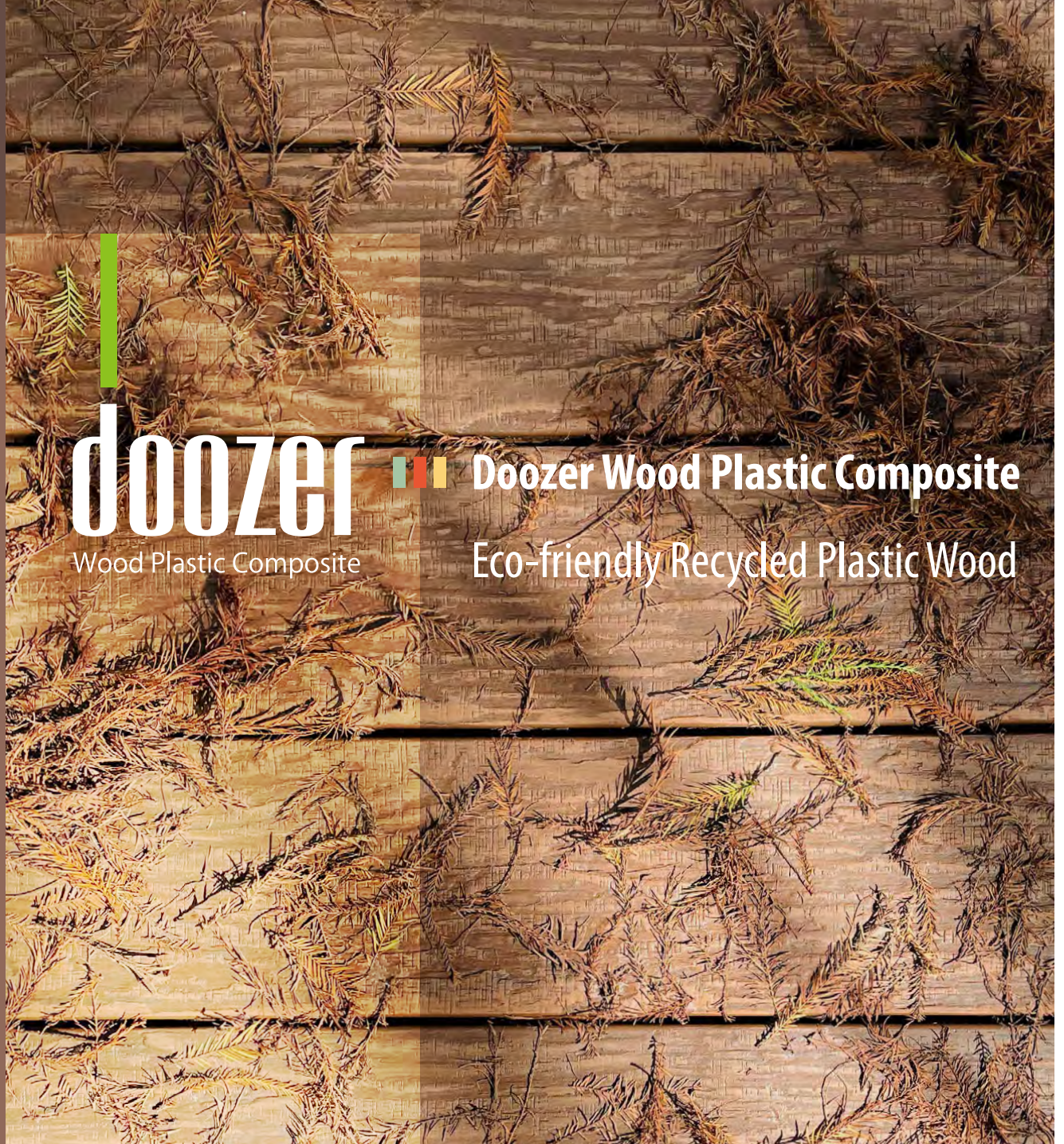
Contact: +886 2 2585 3884 | Service email: service@doozer.com.tw



Website



FB



doozer
Wood Plastic Composite



Doozer Wood Plastic Composite
Eco-friendly Recycled Plastic Wood



Wood Plastic Composite

What are the differences between Doozer and other WPC brands?

Following a Blue Ocean strategy, Doozer is committed to long-term development.

- **Our brand serves as a beacon, helping customers identify superior products and services.**
- **Integrity is like a safe harbor, giving customers a sense of security and confidence.**

While some suppliers frequently rebrand or reopen under new names, we take pride in being accountable for our own golden reputation.

To be considered a true brand goes beyond designing an eye-catching logo or crafting a luxurious slogan; it involves building professional credibility and establishing a strong presence in the industry.

- **Positive customer feedback has strengthened our reputation as a top industry leader.**

Recently, leading construction companies have grown increasingly aware of the value of this heritage. When selecting top vendors, they prioritize quality and reputation.

At Doozer, we uphold our brand's integrity and resist the pressures of price-cutting competition. Whether in terms of performance or reputation, Doozer Wood has consistently played a dominant role in the industry.

Doozer Wood Plastic Composite Eco-friendly Recycled Plastic Wood

Sustainable building materials that promote a pure and natural lifestyle.

Optimal Composition x Precision Molding

Doozer Wood attains its refined structure through an extrusion process, using approximately 45% recycled polyethylene (PE) and 50% recycled wood fibers.

Doozer Wood x Composition Analysis

- 50% recycled wood fibers
- 45% recycled polyethylene (PE)
- 5% others

Natural wood is ideal for creating a cozy atmosphere and bringing nature indoors. However, with growing concerns about forest conservation, the demand for sustainable alternatives has risen. Eco-friendly wood-plastic composite (WPC) materials, made from recycled polyethylene and wood fibers, offer both sustainability and durability.

They resist aging and insect damage, requiring minimal maintenance, making them a preferred choice for outdoor construction.

Doozer Wood, initially used in decking projects, has become increasingly popular for applications involving inorganic materials,

such as concrete buildings or warehouses.

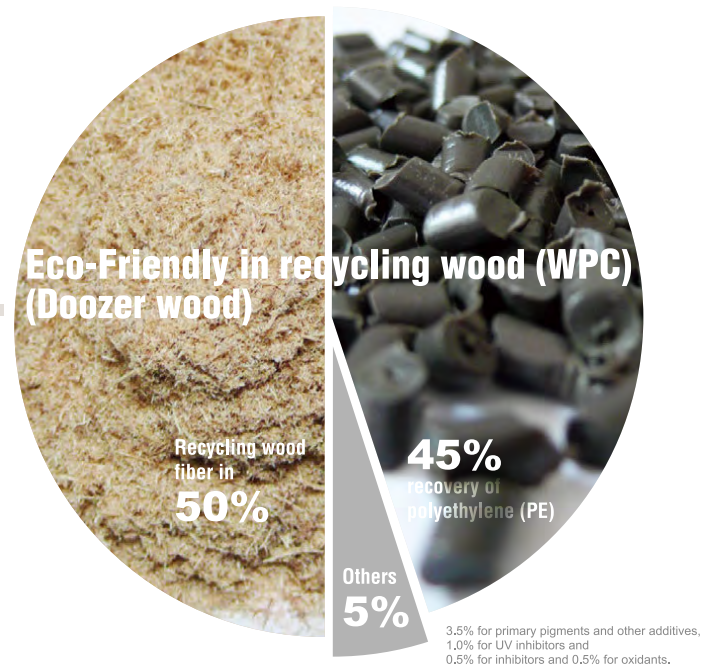
These structures utilize sustainable materials—specifically eco-friendly recycled WPC—for constructing walls and roofs, contributing to a visually appealing and durable environment.

Additionally, it serves functional purposes such as providing shade and reducing heat buildup from sunlight reflection.

Due to its material properties, eco-friendly recycled WPC is highly resistant to moisture from rain and humidity, preventing mold and corrosion.

This significantly reduces the need for protective coatings, lowering costs and maintenance efforts.

With its added natural wood texture, Doozer Wood is an excellent choice for space design materials.



Supporting Environmental Protection

Supporting environmental protection is one of the reasons for choosing WPC wood-plastic composite products.

Before producing WPC wood-plastic composite products, Doozer thoroughly ensures the sources of recycled materials and verifies their stability and quality.

Differences in Plastic Recycling

Doozer Wood uses **first-generation recycled plastic, wood fibers, and other non-toxic materials**, helping divert thousands of tons of waste from landfills and incinerators annually.

This helps reduce pollution and deforestation while maintaining a zero-waste, non-toxic production process.

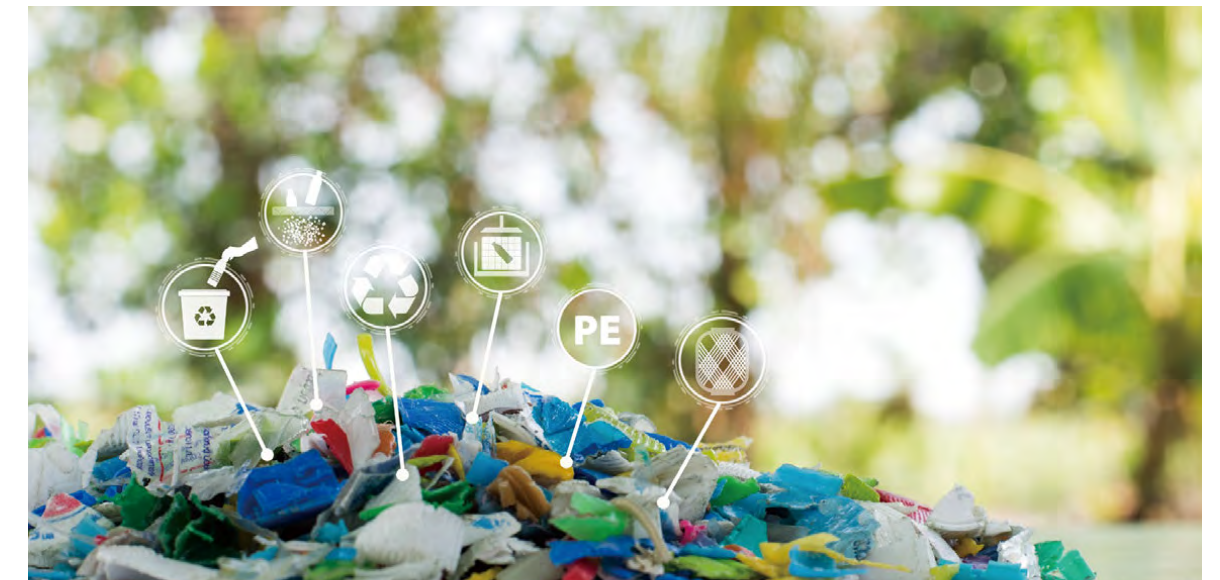
Unlike cheaper alternatives, **Doozer Wood does not use low-quality recycled plastics**, which deteriorate with each recycling cycle.

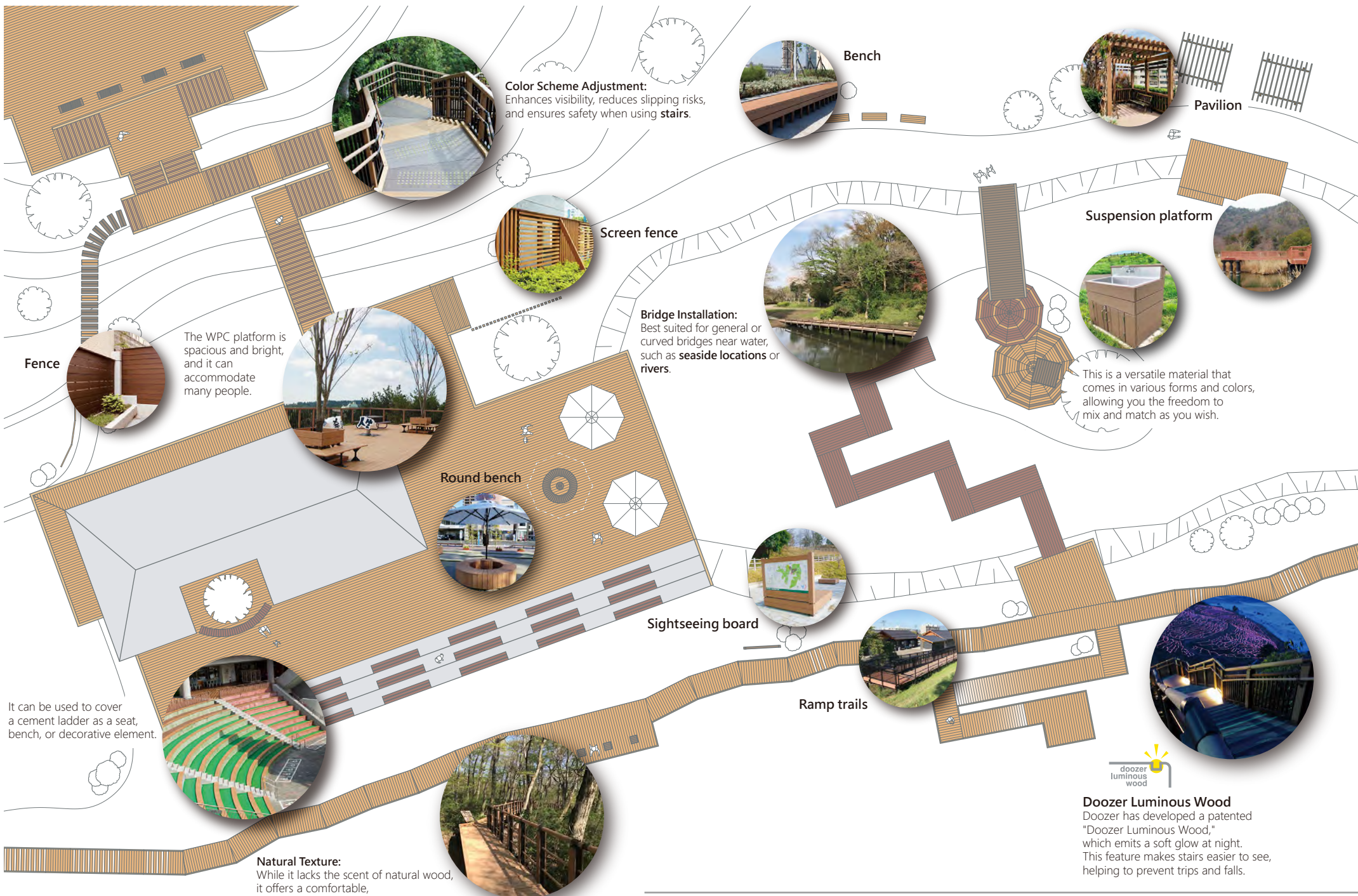
To ensure safety and durability,

particularly in load-bearing applications, we use first-generation recycled plastic for strong, reliable structures.

With its stable, crack-free texture and slip-resistant surface,

Doozer Wood provides a safe outdoor environment, ideal for children and pets.





Color Scheme Adjustment:
Enhances visibility, reduces slipping risks, and ensures safety when using stairs.

Bench

Pavilion

Suspension platform

Screen fence

Bridge Installation:
Best suited for general or curved bridges near water, such as **seaside locations or rivers.**

This is a versatile material that comes in various forms and colors, allowing you the freedom to mix and match as you wish.

The WPC platform is spacious and bright, and it can accommodate many people.

Fence

Round bench

Sightseeing board

Ramp trails

It can be used to cover a cement ladder as a seat, bench, or decorative element.

Natural Texture:
While it lacks the scent of natural wood, it offers a comfortable, wood-like texture for effortless walking.



Doozer Luminous Wood
Doozer has developed a patented "Doozer Luminous Wood," which emits a soft glow at night. This feature makes stairs easier to see, helping to prevent trips and falls.

Doozer Wood Everywhere Around You

Doozer Wood, crafted from eco-friendly recycled WPC, offers exceptional durability and withstands harsh conditions.

It is ideal for bridges over rivers, forest walkways, busy streets, campsites, and various other applications. It is user-friendly and long-lasting, requiring minimal protective coatings or maintenance.

Is our product waterproof? Is it suitable for wet environments?

"Doozer Wood" is an eco-friendly recycled material with superior performance and low water absorption. It has significantly lower water absorption compared to timber, greatly reducing the risk of soaking and decay over time.

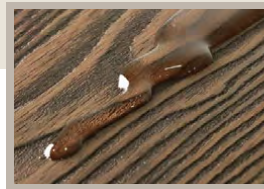
Our WPC products are perfect for water-prone areas, including seaside resorts, hot springs, swimming pools, lakesides, marina boardwalks, and sun decks.

Doozer Eco-friendly Recycled Plastic Wood Four Key Advantages for Long-lasting Performance

Doozer Wood is a premium WPC composite, engineered with advanced technology to provide the following benefits:

Our WPC products resist abrasion and endure external pressure, weathering, salt damage, and chemical exposure. They require no extra protective treatments, saving you time and money.

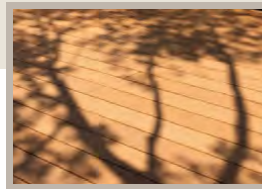
Our products perform reliably in temperatures ranging from 70°C to -40°C. Even in extreme weather conditions, they remain undamaged.



Water Resistance

Low Water Absorption & Crack Resistance

Doozer Wood offers excellent moisture resistance and does not crack due to water absorption, even in environments with long-term exposure to rain, rivers, or seawater. Examples include poolside areas, waterfront landscapes, and humid indoor or outdoor locations, providing stable and durable protection.



Good Light-Resistance

UV Resistant & Anti-Aging

Natural wood may age and fade over time when exposed to sunlight. Doozer Wood, however, provides excellent UV resistance, preventing discoloration and maintaining its bright appearance for years. It is ideal for outdoor flooring, public spaces, and construction projects exposed to prolonged sunlight.



Non-slip, Strong Friction

Pest-Repellent & Antibacterial

Our products feature a textured, scratch-resistant surface, ideal for areas prone to wear, such as walkways, parks, or public spaces. Doozer Wood's slip-resistant surface is perfect for stairs and ramps, minimizing slipping risks and ensuring safety.



Heat Resistant, Not Easily Burning

Flame-Retardant, No Sustained Burning

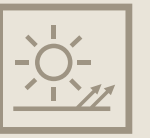
Doozer Wood's fire-resistant properties make it ideal for high-temperature environments, as it does not easily ignite or sustain burning. For example: In the event of a fire, it resists combustion and does not emit toxic gases, ensuring safety for both indoor and outdoor applications.



HARD WEARING



ROT-PROOF



UV RESISTANT



LOW WATER ABSORPTION



ANTISEPTIC



FLEXIBLE



NON-TOXIC



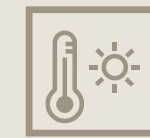
OUTSTANDING DURABILITY



ALL WEATHER



HIGH STABILITY



RESISTANCE THERMAL



PEST RESISTANT



HOT SPRINGS

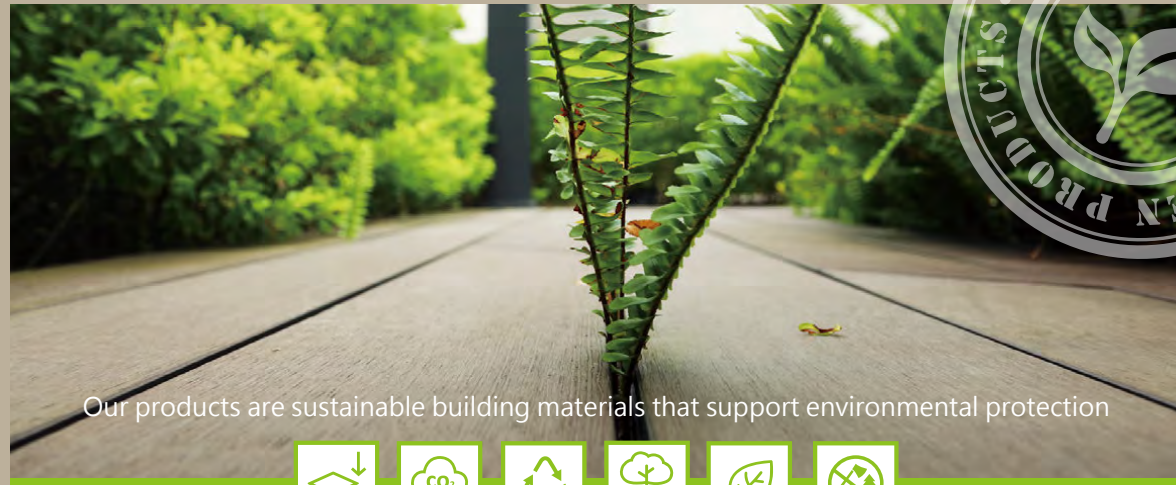


DOOZER LUMINOUS WOOD

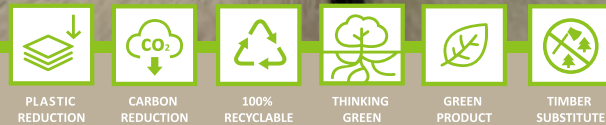


INTERIOR/EXTERIOR USEABLE

Green Products



Our products are sustainable building materials that support environmental protection



Why Choose Doozer Wood? A Safer, Greener Solution!

Doozer Wood is made from two key materials:

- **Recycled Wood Fibers**, sourced from sterilized waste furniture.
- **Recycled Plastic (Polyethylene - PE)**, providing exceptional durability, toughness, low water absorption, and stability.

By combining these materials, we produce **Wood Plastic Composite (WPC)**, which replicates the look of natural wood while offering superior durability and resilience.

50% Recycled Wood Content for a Natural Look & Feel

Doozer Wood incorporates 50% recycled wood fibers, offering a texture that closely resembles natural wood.

Unlike traditional wood, it overcomes key challenges, including:

- **Rot and decay**, which require frequent repairs.
- **The need for fresh wood**, reducing deforestation and promoting ecological balance.

Sustainable & Long-Lasting

Doozer Wood is among the most sustainable building materials, offering durability while preserving the environment.

"Doozer Wood" with International Certifications



Doozer is dedicated to top-tier product quality, ensuring each item meets rigorous certification standards.

Certified by ISO, CE, FSC, and other international bodies, our products adhere to the highest standards of quality, safety, and environmental responsibility.

We follow stringent manufacturing protocols to maintain an efficient quality management system.

With global recognition and industry acclaim, we have cemented our position as a market leader.

You can obtain additional information about Doozer products, such as:

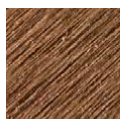
- Certifications: Inspection/Testing
- Testing Reports: Verification/Certification

For further technical details, contact us at:

Service Line: +886-2-2585-3884

Email: service@doozer.com.tw

Doozer Wood Product Series



Classic Series

Versatile in Size, Color, and Style



Surface Grinding

A finely polished finish creates a sleek, natural wood-like texture.



Wave Texture

Enhanced patterns ensure superior grip and anti-slip performance, even in wet conditions.



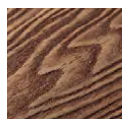
Doozer Luminous Wood

A distinctive luminous finish enhances both aesthetics and visibility, perfect for low-light areas.

Classic Series adopts advanced surface treatment techniques, offering excellent UV resistance and antibacterial properties. Its surface remains vibrant and smooth over time without fading or discoloration.

This series is widely popular among customers in regions like Japan for its sleek design, natural texture, and superior performance.

The Classic Series is a symbol of timeless elegance and durability.



Natural Series

A Perfect Balance of Beauty and Safety

■ Elegantly Flowing Natural Wood Grain

Featuring flowing wood grain textures, this series seamlessly combines natural aesthetics with modern functionality.

■ **N1 Series** | Features a classic embossed wood grain texture.

■ **N2 Series** | 3D wood grain is the closest to natural log texture.

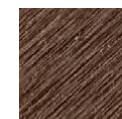
Natural Series features advanced embossing and coloring techniques, delivering a three-dimensional texture that mimics real wood grain.

This series replicates the look of natural logs while offering superior UV resistance and fade protection.

Its affordable pricing and high-quality aesthetics make it an excellent choice for balancing beauty and budget in architectural designs.

For more products, please visit our website.

The product colors in the catalog may vary slightly from the actual product colors due to differences in printing materials or display effects on electronic screens. This is a normal phenomenon. We kindly recommend requesting samples for accurate color reference.



Strength Series | H026196

Premium Decorative Panels for Indoor & Outdoor Applications

■ 3D Linear Texture

Large-area application

Can visually stretch the space, enhancing the depth and dimensionality of the wall.

Regional

Combined with other materials to enhance the agility and design of the space.

H026196 is a multi-purpose panel ideal for indoor and outdoor applications, including grilles, ceilings, and feature walls.

With seamless installation and exceptional durability, it's perfect for high-end spaces like hotels, offices, and commercial venues.

With a focus on sustainability, H026196 meets high environmental standards, ensuring safety, reliability, and long-lasting performance.



Strength Series | Panels

Integrated Design with Dual-Layer and Dual-Color Options

■ Embossed Patterns

Featuring a dual-layer structure and wear-resistant finish, these panels perfectly blend aesthetics with functionality. The outer layer provides weather resistance, while the inner core enhances structural stability. For those seeking high-performance WPC solutions, the Strength Series delivers an optimal blend of beauty, durability, and long-term value.



Strength Series Panels incorporate a dual-layer structure with a high-performance outer layer for weather resistance and an inner core for structural stability.

This design enhances durability, while the embossed patterns provide a refined aesthetic suitable for both residential and commercial projects.



New-Generation High-Performance Products

Building upon existing WPC technology, the new generation incorporates advanced co-extrusion with a high-performance surface layer (0.2-0.3mm thick). This layer improves wear resistance, UV protection, antibacterial properties, anti-slip performance, and flexibility. It also features a natural, three-dimensional wood grain texture, replicating realistic tree bark. This innovation enhances both the performance and appearance of WPC without increasing costs, making it an attractive choice. Its unique advantages have earned Doozer Wood widespread customer acclaim.

A Benchmark in Design and Durability

This high-performance WPC combines durability and versatility, suitable for both interior and exterior applications. It excels in heat resistance, fade resistance, and low maintenance, retaining strength and aesthetics even in harsh conditions. With its modern aesthetics and exceptional functionality, the new generation of WPC provides seamless solutions for high-demand applications, setting a benchmark for both design and performance.

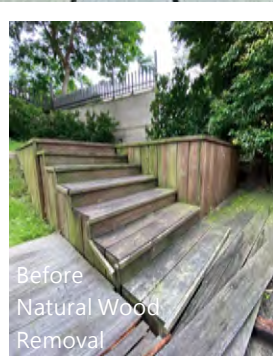
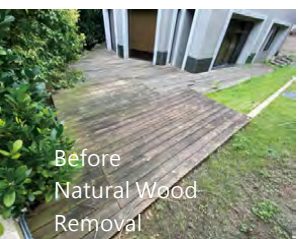
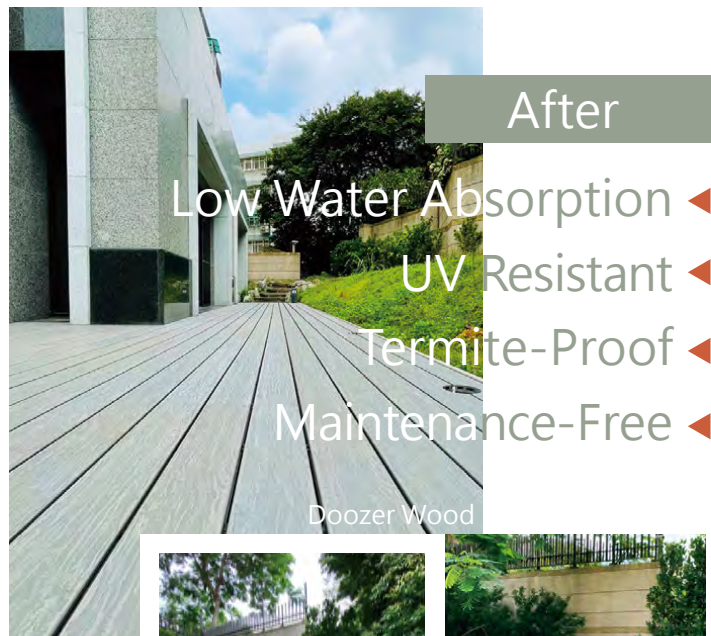
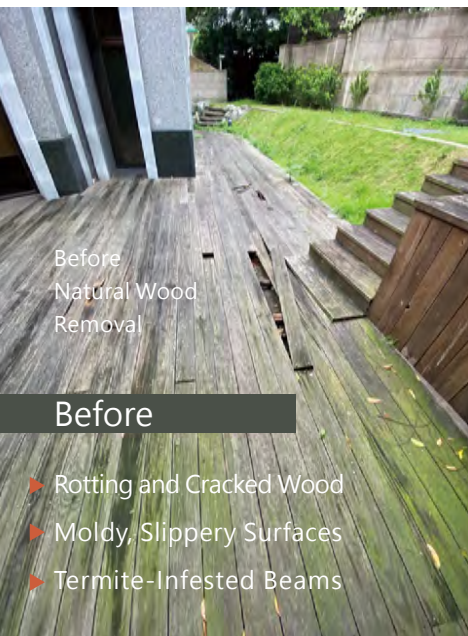
Strength Series

Hollow Board 2.6 x 19.6 cm



Watch the installation video





Premium Enhancements & Superior Fade Resistance

All Doozer Wood Products Offer Enhanced Hardness, Flexibility, and Fade Resistance

Enhanced Durability & Longevity

WPC products naturally have a softer texture, which may raise durability concerns in high-demand applications.

Doozer Wood solves this issue by reinforcing WPC hardness while preserving flexibility to prevent breakage. Ideal for outdoor pathways, platforms, bridges, and exterior walls requiring both strength and durability.

Advanced Fade-Resistant Technology

Following early customer feedback, especially from Australia, Doozer Wood developed an advanced fade-resistant formula.

The proportion of color-enhancing components was increased 2–3 times, achieving an optimal blend.

This innovation delivers vibrant, long-lasting color and a natural wood-like texture at no additional cost.

Doozer Wood's fade-resistant formula is used across all series, ensuring durable, visually striking materials trusted by customers worldwide.

Years of proven performance have made Doozer Wood a benchmark for WPC innovation.



| ★ Regular Stock |

Product Specifications		Classic Series		Solid
Series No.	Sectional View	Vide Elevation	Dimensions (cm)	Weight (kg/m)
S005128			0.5 x 12.8	0.85
S010120			1.0 x 12.0	1.60
S011048			1.1 x 4.8	0.85
S012088			1.2 x 8.8	1.70
S013098			1.3 x 9.8	1.93
S015200			1.5 x 20.0	4.30
★ S016088			1.6 x 8.8	2.10
S020135			2.0 x 13.5	2.10
★ S023038			2.3 x 3.8	1.35

| ★ Regular Stock |

Product Specifications		Classic Series		Solid
Series No.	Sectional View	Side Elevation	Dimensions (cm)	Weight (kg/m)
★ S023088-A			2.3 x 8.8	2.80
S023088-B			2.3 x 8.8	2.90
★ S023138-A			2.3 x 13.8	4.55
★ S023138-B			2.3 x 13.8	4.56
S023148			2.3 x 14.8	4.88
S023150			2.3 x 15.0	4.73
S023150			2.3 x 15.0	4.73
★ S028145-A			2.8 x 14.5	6.12
★ S028145-B			2.8 x 14.5	5.80
S030040			3.0 x 4.0	1.66



| ★ Regular Stock |

Product Specifications		Classic Series		Solid
Series No.	Sectional View	Side Elevation	Dimensions (cm)	Weight (kg/m)
★ S030105-A			3.0 x 10.5	4.45
★ S030150-A			3.0 x 15.0	6.13
S030150-B			3.0 x 15.0	6.13
★ S032057			3.2 x 5.7	2.55
S035140-A			3.5 x 14.0	7.09
S035140-B			3.5 x 14.0	6.81
★ S038038			3.8 x 3.8	2.22
S038078-A			3.8 x 7.8	4.21
★ S038088			3.8 x 8.8	4.86

Product Specifications		Classic Series		Solid
Series No.	Sectional View	Side Elevation	Dimensions (cm)	Weight (kg/m)
★ S038138-A			3.8 x 13.8	7.28
S038138-B			3.8 x 13.8	7.17
S046480			4.6 x 48.0	33.70
★ S048048			4.8 x 4.8	3.25
S048098			4.8 x 9.8	6.75
S048198			4.8 x 19.8	14.04
S060060			6.0 x 6.0	4.80
S073198			7.3 x 19.8	20.20
S088088			8.8 x 8.8	10.53
★ M030048			3.0 x 4.8	0.73

| ★ Regular Stock |

Product Specifications		Classic Series	Hollow	
Series No.	Sectional View	Vide Elevation	Dimensions (cm)	Weight (kg/m)
H023098-A			2.3 x 9.8	2.57
H023098-B			2.3 x 9.8	2.50
★ H023147-A			2.3 x 14.7	2.94
H023147-B			2.3 x 14.7	3.00
★ H023147-C			2.3 x 14.7	3.00
H023250			2.3 x 25.0	4.41
H025075			2.5 x 7.5	1.77
★ H025145			2.5 x 14.5	3.35
H025147-A			2.5 x 14.7	3.15

| ★ Regular Stock |

Product Specifications		Classic Series	Hollow	
Series No.	Sectional View	Side Elevation	Dimensions (cm)	Weight (kg/m)
★ H028145-B			2.8 x 14.5	3.13
H028155			2.8 x 15.5	3.55
H030100			3.0 x 10.0	2.11
★ H030150			3.0 x 15.0	4.00
★ H038038-A			3.8 x 3.8	1.59
H038038-B			3.8 x 3.8	1.27
HR038038			3.8 x 3.8	0.98
H038070			3.8 x 7.0	1.95
★ H038088			3.8 x 8.8	2.77

| ★ Regular Stock |

Product Specifications		Classic Series	Hollow	
Series No.	Sectional View	Side Elevation	Dimensions (cm)	Weight (kg/m)
★ H038138-A			3.8 x 13.8	4.14
★ H038138-B			3.8 x 13.8	3.97
H040150			4.0 x 15.0	5.25
H040200			4.0 x 20.0	7.07
H043150			4.3 x 15.0	3.95
H048143			4.8 x 14.3	3.50
H050100-A			5.0 x 10.0	2.22
★ H050100-B			5.0 x 10.0	4.38
★ H050160			5.0 x 16.0	4.75
H050200-A			5.0 x 20.0	5.12

| ★ Regular Stock |

Product Specifications		Classic Series	Hollow	
Series No.	Sectional View	Side Elevation	Dimensions (cm)	Weight (kg/m)
H050200-B			5.0 x 20.0	7.84
★ H060120			6.0 x 12.0	4.45
★ H088088-A			8.8 x 8.8	8.45
H088088-B			8.8 x 8.8	5.63
★ H088198			8.8 x 19.8	15.25
H095300			9.5 x 30.0	12.60
★ H105105			10.5 x 10.5	11.62
★ H118118			11.8 x 11.8	14.04
★ H140140			14.0 x 14.0	18.18
★ H158158			15.8 x 15.8	19.76



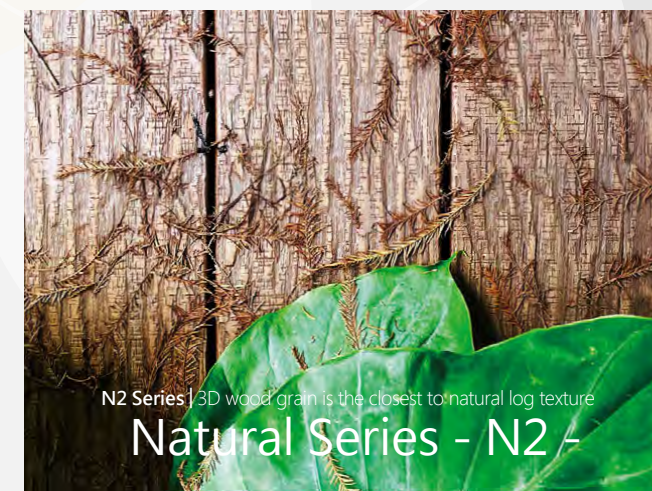
Natural Series - N1 -

N1 Series—Features a classic embossed wood grain texture

★ Regular Stock |

Product Specifications		Natural Series		
Series No.	Sectional View	Side Elevation	Dimensions (cm)	Weight (kg/m)
★ H025146 -N1-			2.5 x 14.6	3.00
★ H025146 -N2-			2.5 x 14.6	3.00
★ S016088			1.6 x 8.8	2.10
S020135			2.0 x 13.5	2.10
S020140			2.0 x 14.0	3.55
S023138-A -N1-			2.3 x 13.8	4.60
S023138-A -N2-			2.3 x 13.8	4.60
★ S023138-B -N1-			2.3 x 13.8	4.60
S023138-B -N2-			2.3 x 13.8	4.60

Product Specifications		Strength Series		
Series No.	Sectional View	Side Elevation	Dimensions (cm)	Weight (kg/m)
★ H022138			2.2 x 13.8	3.00
H024150			2.4 x 15.0	3.70
★ H026196			2.6 x 19.6	2.80
S020135			2.0 x 13.5	2.20
★ S023137 -Dual-Color Panel-			2.3 x 13.7	4.00



N2 Series | 3D wood grain is the closest to natural log texture

Natural Series - N2 -

The weight and dimensions of the product may vary slightly due to surface treatments. The above data serves as basic reference values. For **non-regular stock** orders: The same model and color require a minimum order of 1 ton for customization.

What are the available color and surface treatment options?



Doozer Wood **colors can be customized upon request.**

Doozer Wood **provides a range of popular, versatile colors favored by customers.**

Featuring wood grain patterns and unique surface treatments, Doozer Wood replicates the texture and look of natural wood. Available in various styles and gloss levels, customers can choose the ideal finish for their needs.

Key Feature: Anti-Slip Properties

Applications include:

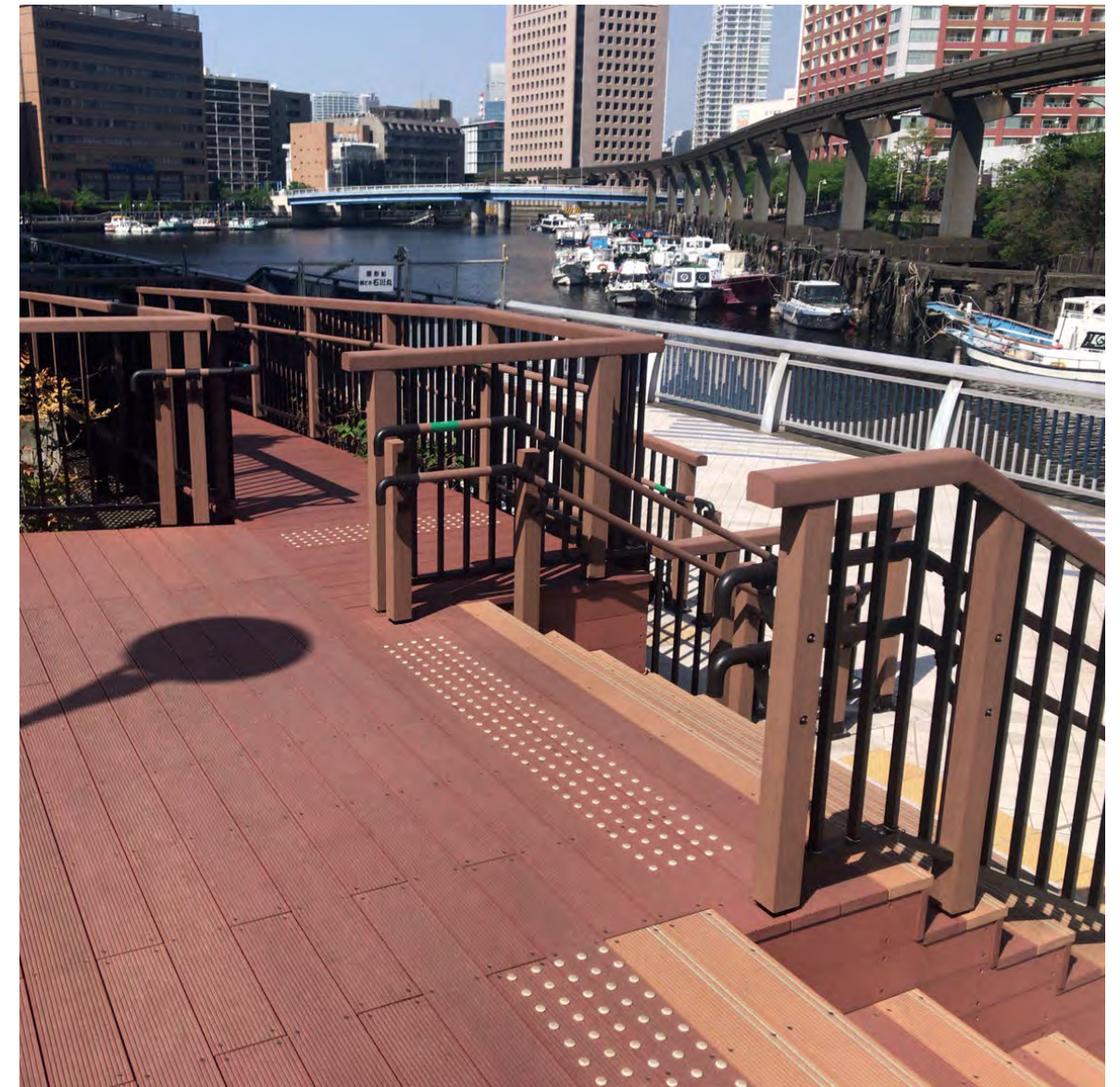
— Tiles/Flooring

Tiles become slippery when exposed to rain or moisture, increasing safety risks.

— Children's Play Areas and Senior-Friendly Zones

Anti-slip properties enhance safety in these areas.

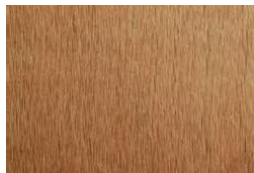
Doozer Wood minimizes the risk of slipping on tiles and flooring, enhancing both safety and durability.



What surface textures are available?

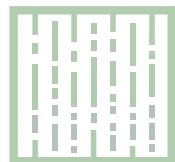
Surface texture

Surface Grinding

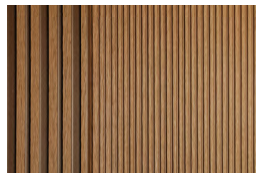


Texture Samples | Product Colors

Teak



Wave Texture



Texture Samples | Product Colors

Teak



3-D Wood Texture

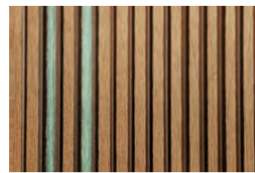


Texture Samples | Product Colors

Teak



Luminous Wood



Texture Samples | Product Colors

Teak



"Doozer Wood" offers various surface options and styles with different processing techniques.

"Doozer Wood" features highly market-accepted and widely favored wood tones.

"Doozer Wood" provides a variety of textures and groove widths to choose from.

Doozer Wood Offers Various Surface and Processing Options

Surface Grinding

Designed to resemble natural wood, the smooth surface is splinter-free, providing a safe and comfortable feel.

Wave Texture

This embossed surface features concave and convex patterns, ensuring superior slip resistance even in wet conditions.

Luminous grooves, like those on Doozer Luminous Wood, improve visibility in low-light conditions, enhancing stairway safety.

3-D Wood Texture

Distinct textures are available in our popular series, such as the Natural Wood Series or the Strength Series.

Designed to highlight natural wood grain, these textures enhance authenticity and visual appeal.

Deep, well-defined grooves enhance the natural beauty of wood, adding depth and sophistication.

Doozer Luminous Wood –

Gentle Illumination with Functional Support

Doozer Luminous Wood emits a gentle, solar-powered glow.

This feature improves visibility, reducing trip hazards in dark environments.

Combining practicality with aesthetics, this design is ideal for spaces needing extra safety while maintaining a refined look.



Soft Glow with Doozer Luminous Wood

With its glowing lines and innovative design, Doozer Luminous Wood provides a secure and aesthetic solution for any environment.

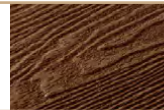
<<< As shown in the image, you can see the colored lines.

What color options are available for our products?

Product colors in this catalog may differ slightly from actual colors due to variations in printing and screen displays.
"This is a natural occurrence, and we appreciate your understanding."
Color samples are available upon request.

A timeless and versatile shade that embodies the rich, luxurious charm of teak. Its elegant tone enhances any setting, creating a classic and refined ambiance.

Teak



Ebony

A deep, mysterious black tone exuding sophistication and modern appeal. It's perfect for bold, minimalist designs or creating striking contrasts in outdoor spaces.



A warm, inviting reddish-brown tone reminiscent of autumn forests. This tone is ideal for enhancing cozy and welcoming atmospheres in gardens and patios.

Redwood



Walnut

A classic, timeless brown with subtle grain patterns, combining versatility and elegance. This tone pairs well with traditional or rustic designs, exuding understated charm.



A mid-tone brown reflecting the natural essence of cedar wood. Its soft hue and texture evoke a sense of calm, making it ideal for serene, harmonious spaces.

Cedar



Basalt

A versatile, contemporary grey tone that integrates seamlessly with modern designs. It offers a neutral base for highlighting colorful plants or furniture in outdoor settings.



Inspired by Nordic minimalism, this tone exudes serenity, reminiscent of soft morning light. Its subtle tones blend seamlessly with rustic designs, creating a cozy and inviting atmosphere.

Latte



Snow White

A crisp, bright white shade symbolizing purity and freshness. Ideal for coastal or minimalist designs, this tone adds elegance to outdoor spaces.



A textured light grey with subtle stone patterns, perfect for a refined, luxurious look. This tone is suitable for high-end architectural projects and creates a sophisticated ambiance.

Marble



Doozer Wood

Eco-friendly recycled WPC products are available in a wide range of colors. These wood-inspired tones are ideal for decks, platforms, and various outdoor spaces. Their muted shades evoke tranquility, allowing for mix-and-match combinations in creative designs.

From modern to traditional, urban to rural—whether natural tones, earthy shades, or deep neutrals, a rich palette of sunlit colors awaits.

Discover your perfect shade today!





What additional accessories are available for WPC products?

Doozer Wood offers various complementary accessories for better installation and customization.

||| Caps

Placed atop posts or pillars, caps provide a clean, decorative finish.

Materials: Metal, plastic, or WPC caps.

||| End Seals

Seals hollow board ends for a smooth, seamless finish.

Protects the board interior while enhancing structural aesthetics.

Materials: WPC.

||| Internal Pipes

Inserted into hollow boards or pillars for added reinforcement and stability.

Also used as concealed conduits for wiring or drainage.

Example:

Reinforces flower stands and climbing racks for added versatility.

Materials: Non-rusting metal pipes (e.g., aluminum alloy).

||| Screws and Fasteners

Doozer Screws:

Designed for seamless, secure WPC board connections.

Hidden Screw/Deck Fastener:

— Board gap: 6.5mm.

— Prevents deck cracking from improper drilling.

Doozer Screw— The Ideal Solution for Decking Installation



HIDDEN
FIXING
SYSTEM



DOOZER
HIDDEN
FASTENER

For Doozer Wood decking, we recommend using the premium "Doozer Screw", a rust-resistant and non-reflective hidden fastener system. This innovative solution ensures a seamless appearance, exceptional durability, and safe installation.

What Type of Fasteners Should Be Used for "Doozer Wood"?

For Doozer Wood, we recommend using plastic hidden fasteners. We provide a hidden fastening solution that makes installation easier and ensures a cleaner, more refined appearance.

You can choose our premium "Doozer Screw" for the best decking installation experience:

1. Rust-Proof Durability:

The "Doozer Screw" is made of high-quality stainless steel with exceptional rust-proof properties. Designed specifically for decking based on years of installation expertise, it reduces splitting and shearing caused by improper drill usage, minimizing material loss and associated costs.

2. Non-Reflective Design:

Coated with a black lacquer finish, the "Doozer Screw" integrates seamlessly with Doozer's black plastic fasteners to eliminate reflective glare on decking surfaces under sunlight, enhancing both aesthetics and safety.

3. Optimized Board Spacing:

The "Doozer Screw" ensures consistent 6.5mm gaps between boards:

Improved Gap Dimensions:
With no screws visible on the decking surface, this installation method provides a clean, uniform appearance. However, small gaps are necessary for proper drainage and ventilation beneath the decking, preventing issues like temperature-induced expansion and contraction.

Enhanced Walking Experience:
The 6.5mm gap prevents issues such as high heels getting stuck, making the decking safe and comfortable for all users.

Important Notes:

Not all fasteners are compatible with Doozer Wood decking. Using incorrect fasteners may compromise system performance, cause safety risks, or void the warranty. We strongly recommend using the "Doozer Screw" and following the installation guide for optimal results. Improper fasteners may:

- Lead to safety risks for users.
- Negatively affect the overall decking system's performance.
- Void the product warranty.

For these reasons, we strongly recommend using Doozer Screw, the ideal solution for optimal performance. Be sure to follow our installation guide carefully to ensure maximum service life for your decking system.



INVISIBLE
FACE
FIXING



DOOZER SCREW
min 6.5mm

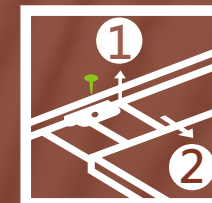
SMART
RESTORE
SOLUTION



Hidden Fastener for Securing Decking Reduces the Risk of Injuries

Using hidden fasteners minimizes the potential risks caused by exposed screws, such as punctures, scratches, or cuts.

1 > Loosen the screws and remove the fasteners



Repair Solution

An easy repair method for components and structures:
With just two simple steps,
you can replace the damaged board quickly and easily.

2 > Slide out the damaged board for replacement

doozer
Wood Plastic Composite



Recommendation: Use the Same WPC Material for the Decking Support Frame – Insights from Doozer's Engineering Experience

For the base or support structure, using WPC plastic ensures that the expansion and contraction directions align with the decking material. This minimizes the risk of screws loosening due to uneven tension. Steel structures are only necessary for special circumstances.

Note: The expansion and contraction rates of steel differ significantly from WPC, increasing the likelihood of surface panel damage and screw breakage.

Comparison of Advantages and Disadvantages Between WPC and Steel Support Frames		
	WPC	Steel Support Frames
Price	✔ Affordable	Price fluctuates and depends on market rates.
Thermal Expansion and Contraction	✔ Consistency	Different rates compared to WPC, increasing the risk of tension-induced loosening, surface damage, or screw breakage.
Noise	✔ No noise	Produces sound (e.g., resonance, echoes) and may create a less stable or quieter experience.
Installation	✔ Easy to install	Requires experienced workers or specialized equipment for proper installation, leading to higher labor costs.
Maintenance	✔ Simple	Maintenance is challenging due to the need for additional equipment and precision in matching components.
Warranty	✔ Perfect	Limited or no warranty; requiring additional protection and support measures.

Derived from Doozer's Engineering Expertise—

Does the WPC Deck Warp Easily?

There are two possible reasons for decking deformation:

- 1 — Flaws in the WPC Product:
 - ✔ "Doozer Wood" is manufactured in-house under strict quality control to ensure stable physical properties, minimizing the risk of warping or deformation.
 - ✔ In the unlikely event of any issue, we actively honor our warranty and provide full support to address the problem.
- 2 — Improper Installation:
 - ✔ Proper installation according to Doozer's guidelines or local engineering building codes is essential. When installed and used under normal conditions, the WPC deck will not warp or deform.



The video of Doozer Wood WPC decking project

For small wooden houses, simple structures, agricultural warehouses, and other innovative foundation solutions

BGF & Spike Frame

BGF = Base Ground Foundation (Four-Leg Inclined Nail Method)

Requires no heavy machinery, allowing for simple construction with manpower, making it suitable for soft soils and reducing construction time.



Excellent Load Capacity
Capable of withstanding surprising loads.

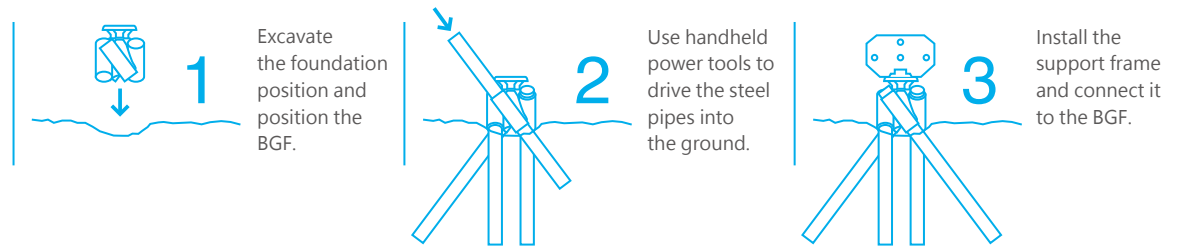


No Restrictions on Installation Sites
Suitable for soft ground, slopes, sandy soil, etc.



Short Construction Time
No need for foundation improvements, excavation, or backfilling.

Simple 3 Steps, Quick and Convenient Installation



What is the "Spike Frame Inclined Nail-Type Foundation Method"?

The Spike Frame Inclined Nail-Type Foundation Method utilizes BGF metal components. By driving four steel pipes into the ground and assembling the support frame, the foundation installation is completed. Compared to traditional methods like concrete or water-based foundations, this method significantly reduces the workflow and shortens the construction time.

BGF Method with "Building Technical Performance Certification"

The Spike Frame Inclined Nail-Type Foundation Method adopts the BGF technique, which has already obtained "Building Technical Performance Certification." This certification can also be submitted when applying for building approvals.

This method allows flexibility in adjusting the frame width, the number of foundations, and the length of the steel pipes driven into the ground, based on the size and type of the structure. It is a highly practical foundation method applicable to various types of buildings.

For example, it can be used in areas where heavy machinery cannot access, such as waterlogged or sandy terrains. Additionally, by increasing the depth of the steel pipes driven into the ground, the foundation's resistance to external forces can be enhanced, offering protection against natural disasters and other potential hazards.

- 1 Determine the design layout for the foundation according to the blueprint.**
- 2 Confirm the BGF foundation locations and use a shovel or auger to create holes for placing the BGF foundations.**
- 3 Place the BGF foundation into the prepared holes and position them correctly.**
- 4 Secure the foundation with bolts and ensure the BGF foundation is stable.**
Point Position foundations correctly and align horizontally.
- 5 Connect all BGF foundations and check alignment before securing.**
Point Ensure pipes are inserted at least 30 cm deep.
- 6 Use handheld power tools (impact driver, etc.) to drive the steel pipes into the ground.**
- 7 Cover the BGF foundations with soil for added stability.**
- 8 Install the framework on the BGF foundations and continue construction.**



Why Choose Doozer WPC Products?



Doozer Treats Clients Like Old Friends with Honesty and Understanding

Doozer always prioritizes the interests and convenience of our partners. No matter where you are in the world, you'll find that Doozer values long-term and stable collaborations. We work to truly understand the perspectives of our clients.

Doozer Observes, Learns, and Acts to Realize Shared Ideals

Japanese craftsmanship emphasizes tidiness and discipline, which greatly inspires Doozer. For example, Japanese carpenters place a board with the words **"Please take off your shoes"** on the decking at the end of each workday. Workers respect this by removing their shoes to avoid dirtying the decking.

In contrast, in Taiwan, it's common for workers to wear shoes on unfinished decking, leaving the workspace messy and trampled. Understanding these differences, Doozer takes additional steps to meet client expectations.

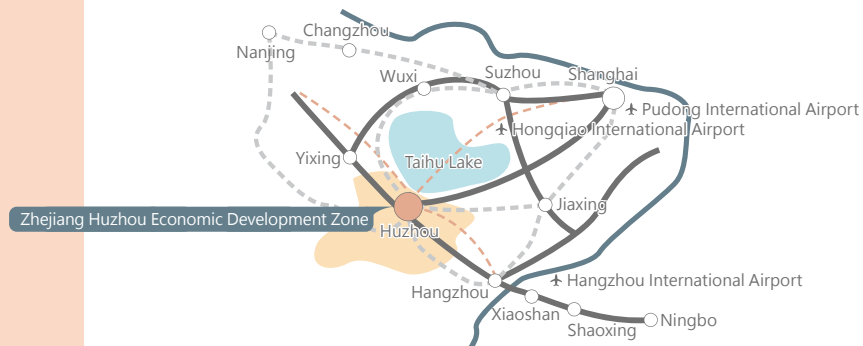
We cover finished work areas daily with protective materials to keep them clean and pristine until the project's completion. Once the project is complete, clients can uncover and inspect the decking in perfect condition.

This approach reflects Doozer's commitment to maintaining a client-focused attitude and delivering results that meet your ideals. We believe that careful planning and action lead to exceptional outcomes, ensuring your satisfaction every step of the way.

Where Is Our Manufacturing Facility Located?

Doozer's production base is situated in Zhejiang Province, China, a strategic location equipped with a complete manufacturing line. This facility features fully automated feeding systems, extrusion molding equipment, single and double screw extruders, and precision WPC post-processing capabilities such as shaping, mixing, cooling, embossing, mold integration, and additional cutting or finishing processes.

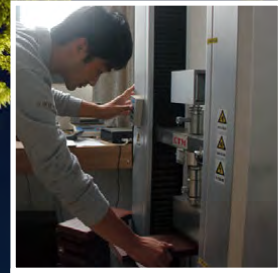
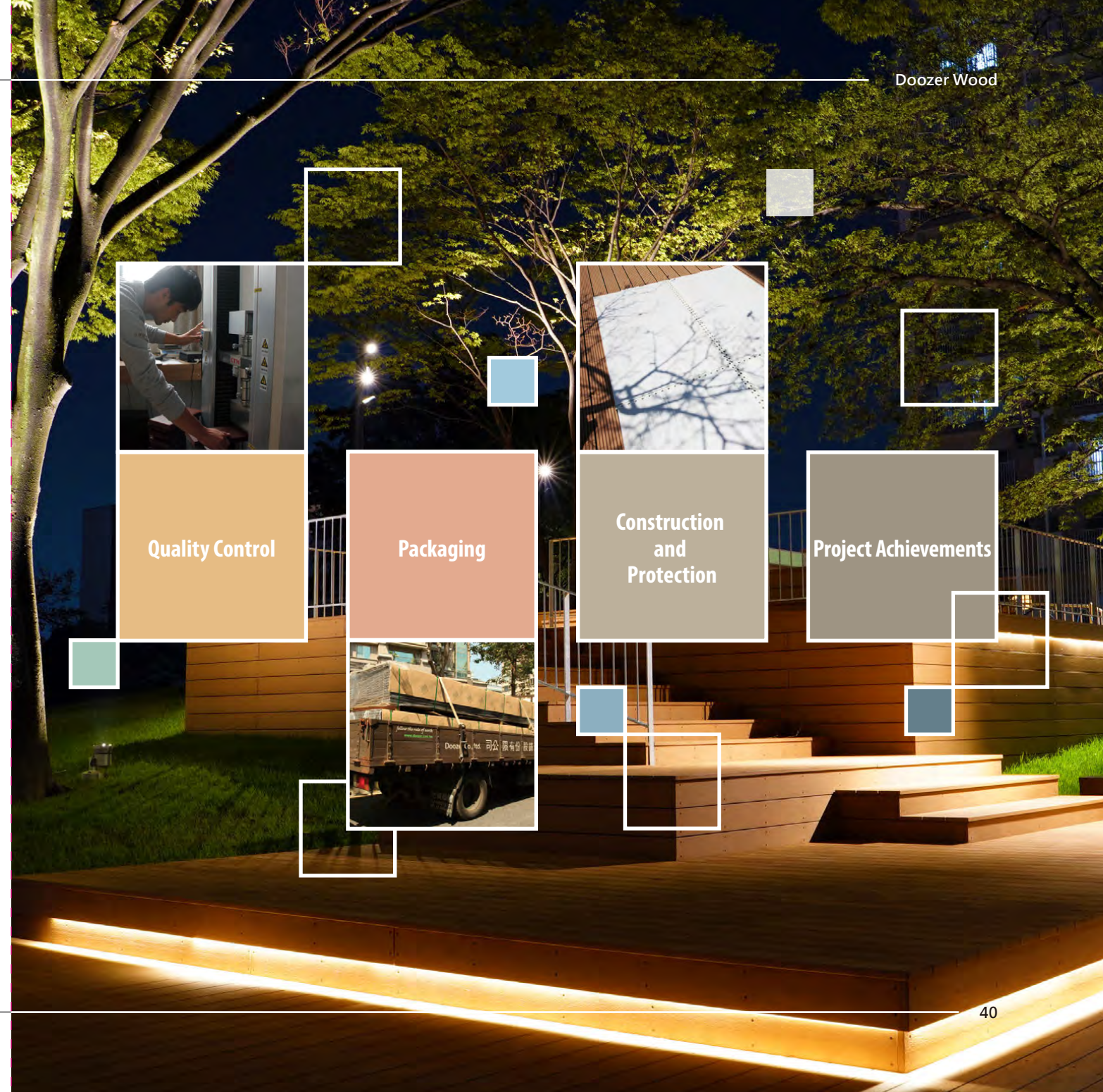
Doozer ensures meticulous attention to manufacturing processes while adapting to the availability and quality of raw materials. Beyond managing production schedules, we work closely with clients to establish effective quality control procedures. Our vertically integrated operations allow us to handle all aspects of production independently and efficiently. From raw material preparation to finished goods, Doozer consistently balances manufacturing scale with reduced lead times, meeting market demands with unparalleled advantages.



Doozer Wood
Manufacturing Process Video



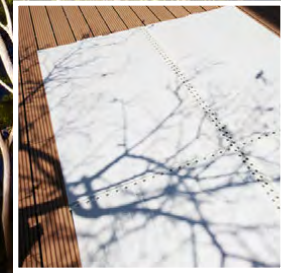
Process Introduction



Quality Control

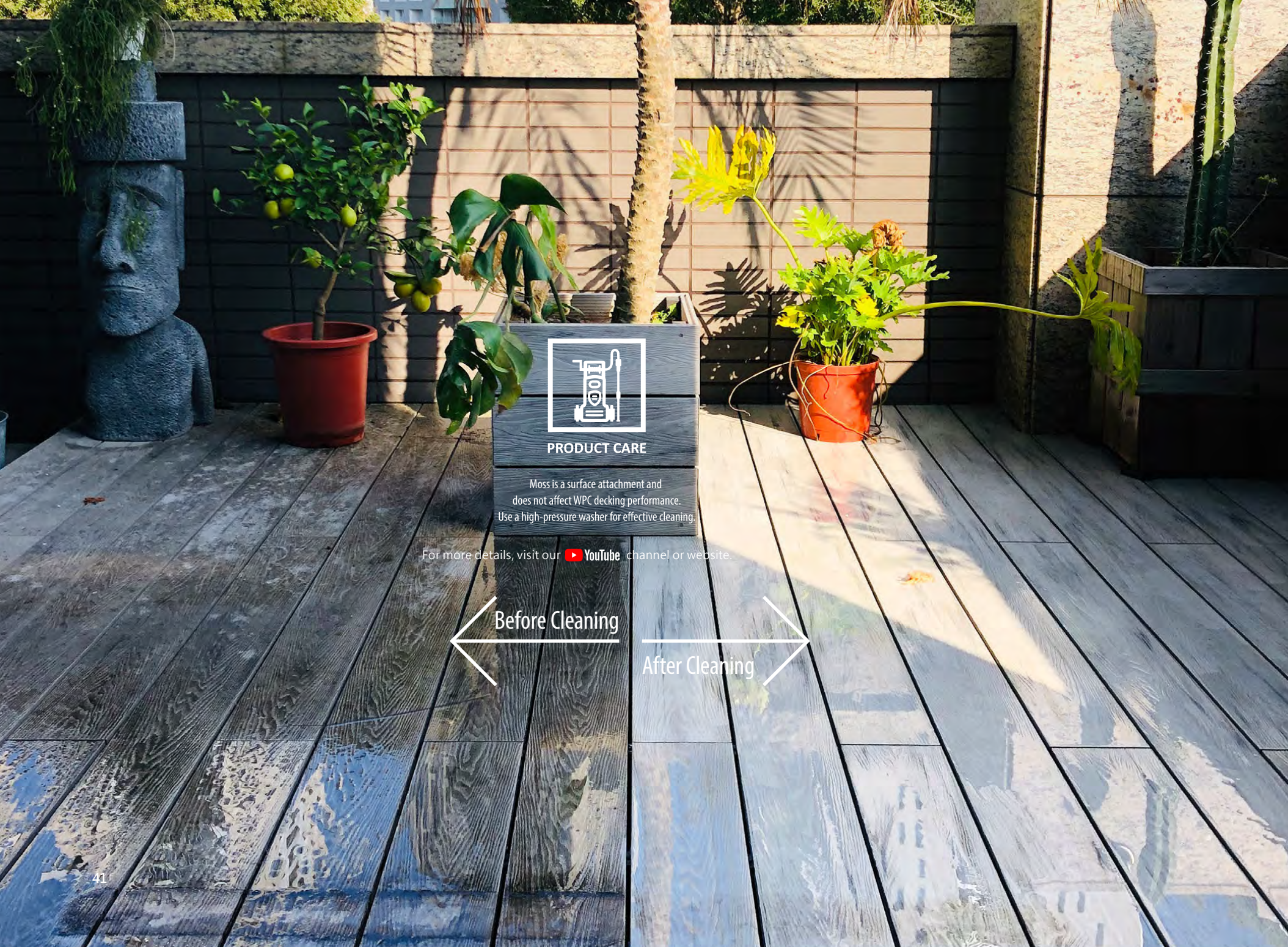


Packaging



Construction and Protection

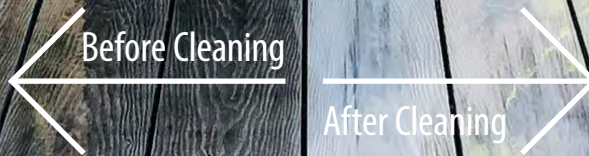
Project Achievements



PRODUCT CARE

Moss is a surface attachment and does not affect WPC decking performance. Use a high-pressure washer for effective cleaning.

For more details, visit our  YouTube channel or website.



How to Clean WPC Products?

WPC decking is designed for low maintenance and durability. Regular cleaning only requires a simple rinse or wash to maintain its appearance.

(For complete cleaning methods, please refer to our YouTube video or maintenance guide.)

To remove stubborn stains such as dirt, mud, moss, or debris, you can use a high-pressure washer as needed.

For further information, scan the QR code or visit our YouTube channel for step-by-step cleaning instructions.



How to Use a High-Pressure Washer?

The Biggest Misconception About WPC Decking

A lack of understanding about WPC materials and their proper usage has led to misconceptions about the design and application of WPC decking. Issues such as warping, deformation, and cracking often arise from inadequate installation or misuse rather than inherent flaws in the product itself.

At Doozer, we proactively address these misconceptions by providing our customers with clear guidance and proper installation practices. Our team offers expert advice and support to ensure the correct use of WPC materials, effectively resolving any concerns or challenges.

Additionally, we provide comprehensive assistance with installation, sharing technical expertise and professional solutions to guide clients through every step of their project.



Does Doozer Value After-Sales Service?



Yes! We are committed to protecting our brand and delivering exceptional after-sales service.

Do Our Products Come with a Warranty?

Yes! We uphold industry-leading warranty services.

If proper procedures and installation guidelines are followed, all Doozer product series are covered by a warranty.

Our dedicated customer service team is always ready to address your concerns, offering professional advice and tailored repair solutions to ensure the best support for any issues that arise.



Industry-Leading Warranty Coverage

Doozer products undergo stringent manufacturing and inspection processes, ensuring consistent quality and reliability. Rest assured, we stand behind our products with 100% confidence.

To give our customers a premium service experience, we provide complete safety and peace of mind through our comprehensive warranty and maintenance services.

In the rare event that an issue is caused by external factors rather than manufacturing defects, our technical team will assist in investigating the problem, offering repairs and maintenance at fair prices, and covering necessary replacements.

Our repair services not only aim to restore product quality but also to prevent potential future damage, keeping WPC decking in optimal condition and reducing maintenance costs to a minimum.

We are committed to ensuring that every project using Doozer products achieves long-lasting excellence.



Sweat and Effort Behind Every Project

Carefully Crafted Landscapes Before Their Beautiful Appearance

Regardless of the size of the project, Doozer approaches every task with dedication. From material production, project design, planning, on-site services, to reliable after-sales maintenance, every project is the culmination of years of experience and hard work.

We emphasize environmental sustainability and respect for the natural world.

“Follow the rule of earth”

We adhere to the original principles of nature, enabling every landscape to blend harmoniously with its surroundings, ensuring its beauty for generations to come.



doozer

follow the rule of earth



Pursuing Excellence in the Details

Some things are worth our unwavering commitment.

In this fast-paced and ever-changing world, we are often driven by speed and passion. However, there is a timeless value that stems from attention to detail—a pursuit that anchors us to craftsmanship and the essence of quality. Details are what define the value of excellence, serving as the foundation for projects that are reliable and enduring.

When we slow down and focus on the present, we discover the beauty in the smallest elements of life. Even the seemingly inconsequential hints of detail reflect the soul of a product and its craftsmanship.

This is not just about work; it's a perspective on life. It's a belief that every detail deserves attention—a commitment Doozer holds close to its heart.

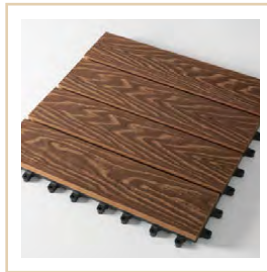
Pursuing excellence is a continuous journey, requiring perseverance and dedication. Every meticulous effort counts because there are things in life that deserve our steadfast commitment. Excellence does not compromise or falter; it evolves through consistent effort and care.

Let Doozer accompany you on a path where **“every detail matters, and excellence thrives.”**

Are Doozer Wood products easy and quick to install?

Absolutely! Our DIY flooring tiles make installation effortless.

Perfect for small indoor spaces such as balconies, porches, and bathrooms, combining simplicity with functionality.



Natural Series

Each tile is designed with natural wood grain patterns.

Color ■ Teak
■ Ebony



Classic Series

Full of Zen-inspired simplicity and elegance in Japanese style.

Color ■ Redwood
■ Ebony



Puzzle Tile Series

The ultimate free-flowing puzzle design series.

Color ■ Brown / 1 Small Tile
■ Gray / 1 Small Tile
■ Mixed



Interlocking Turf

The simplest DIY grass for interior design.

Color ■ Evergreen Radiant Green

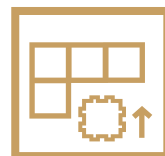
(For more ideas and projects, please visit [Doozer Gallery](#) or our official website.)

The DIY flooring tiles feature an interlocking mesh system, allowing for quick and easy assembly with basic tools.

For larger or more complex areas, power tools may be required for cutting and adjustments.



EASY TO WORK WITH



HIDDEN FASTENER





Environment Floor

Doozer DIY Deck Tiles for Vibrant Spaces

Create a Pollution-Free Outdoor Landscape

Transform your home into a refreshing and eco-friendly outdoor oasis with Doozer DIY deck tiles.

Whether it's crafting a charming garden or a green corner, these tiles provide the perfect choice for modern individuals seeking a natural and aesthetic solution. Unlike traditional wood products that require frequent maintenance to avoid rot and decay, Doozer DIY tiles are crafted from high-quality recycled materials, ensuring both durability and a reduced environmental footprint.

Each tile incorporates carefully processed recycled wood and plastic, showcasing superior craftsmanship that mimics the beauty of natural wood. These eco-conscious tiles are not only weather-resistant but also fade-proof, maintaining their appearance without requiring extensive care. Additionally, their unique structure ensures effective ventilation and drainage, reducing the risk of mold and prolonging the lifespan of the tiles.

Lightweight Assembly for Indoor and Outdoor Versatility

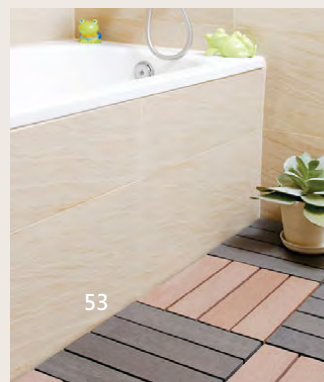
Doozer DIY tiles are designed for ultimate convenience, suitable for balconies, patios, kitchens, and even bathrooms.

Their lightweight structure makes them easy to install without professional tools, and the modular interlocking system allows users to create flexible layouts that suit any space.

Perfect for renters or those looking for quick home improvement projects, these tiles can be assembled and disassembled effortlessly, providing you with a stylish yet practical flooring solution.

With Doozer DIY tiles, enhance your space with sustainable, modern flooring that embodies simplicity, elegance, and functionality.

Tips for Using DIY Interlocking Deck Tiles



Tip1 Keep Bathroom Floors Dry and Safe

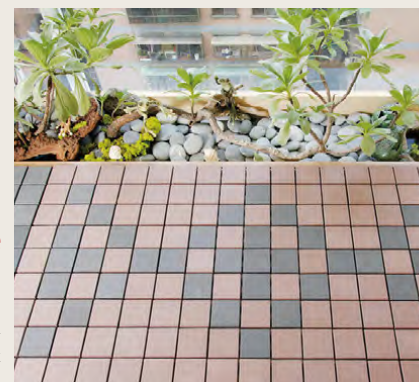
Effectively solve the issue of water accumulation in the bathroom with tiles designed for superior water resistance and anti-slip properties. These tiles create a secure bathing space, ensuring safety for both children and elderly users.



Tip2

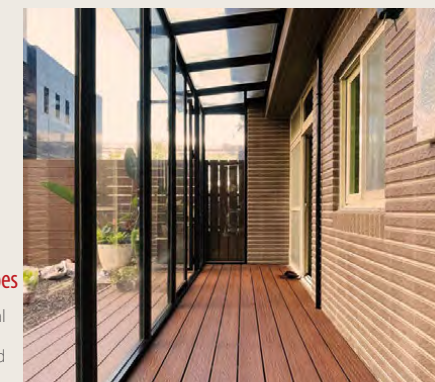
Simple DIY for Innovative Style

No need for tools! The easy assembly process allows you to create personalized layouts with unique designs. Whether it's a balcony or another indoor corner, these tiles bring a refreshing look and a touch of creativity to your home.



Tip3 Beautify Outdoor Garden Landscapes

Perfect for outdoor spaces! These tiles are ideal for decks, transforming them into stylish, practical areas. Enjoy enhanced aesthetics and functionality in your outdoor living spaces.



Tip4

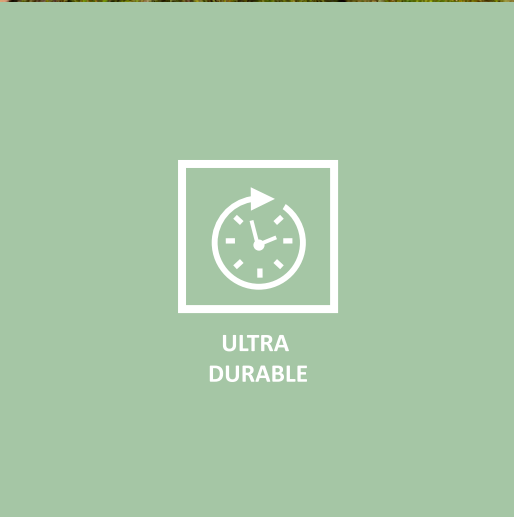
Versatile Sizes and Layout Options

Available in multiple colors, finishes, and sizes, these tiles cater to diverse design preferences. Whether you're looking for a uniform or custom pattern, they provide the flexibility to meet your spatial and aesthetic needs.

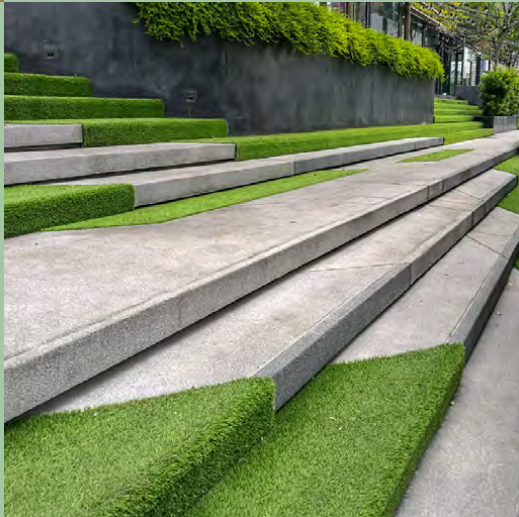




EVERGREEN



ULTRA DURABLE



LESS MAINTENANCE



PERSONALIZED



Why Choose Doozer Evergreen Turf?

Immerse yourself in the lush, **evergreen** lifestyle effortlessly.

No Maintenance Hassles

Doozer Evergreen Turf eliminates the need for trimming, watering, fertilizing, or pest control, saving you time and maintenance costs. This hassle-free feature not only adds convenience but also enhances your property's value with breathtakingly beautiful, low-maintenance landscaping.

Eco-Friendly and Premium Living Spaces

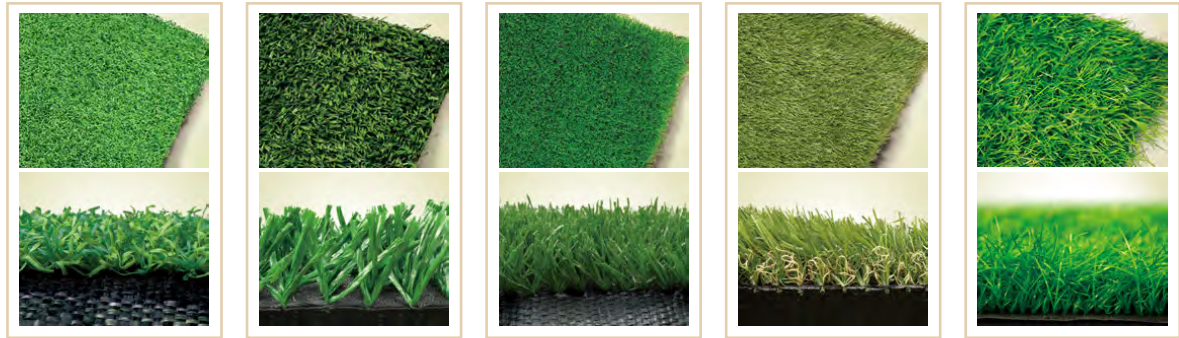
Our products are free from heavy metals, ensuring environmentally friendly solutions while elevating your living environment. With exceptional durability, the turf adapts seamlessly to any natural surroundings, maintaining stability even in extreme weather. Featuring high density and elasticity, it quickly recovers from pressure, ensuring a pristine appearance that lasts.

Designed for Natural Elegance

The lifelike aesthetics of Doozer Evergreen Turf bring a touch of nature to any setting, regardless of the season. This versatile design offers timeless beauty, enhancing your outdoor spaces with greenery that never fades.

Easy to Install and Clean

Installation is straightforward, and cleaning is a breeze. Enjoy vibrant, stylish greenery without the hassle, transforming your space into a lush, inviting haven. Whether indoors or outdoors, the ever-fresh look of Doozer turf ensures your surroundings stay vibrant and appealing year-round.



Product Code: TU01

- Material: PE
- Backing: PP
- Density: 58,800
- Color: Evergreen
- Grass Height: 14mm
- Dimensions & Weight:
 - 1m x 5m / 10kg
 - 2m x 10m / 40kg

- Gauge: 3/16 inch
- Stitch Rate: 28/10cm

Product Code: TU02

- Material: PE
- Backing: PP
- Density: 10,500
- Color: Emerald Green
- Grass Height: 50mm
- Dimensions & Weight:
 - 1m x 5m / 10kg

- Gauge: 3/4 inch
- Stitch Rate: 20/10cm

Product Code: TU03

- Material: PA
- Backing: PP
- Density: 36,800
- Color: Emerald Green
- Grass Height: 20mm
- Dimensions & Weight:
 - 1m x 5m / 10kg
 - 2m x 10m / 40kg

- Gauge: 3/8 inch
- Stitch Rate: 36/10cm

Product Code: TU04

- Material: PE+PP
- Backing: PP+Mesh
- Density: 17,850
- Color: Yellow-Green
- Grass Height: 35mm
- Dimensions & Weight:
 - 1m x 5m / 10kg
 - 2m x 10m / 44kg

- Gauge: 3/8 inch
- Stitch Rate: 17/10cm

Product Code: TU05

- Material: PE
- Backing: PP+Mesh
- Density: 11,340
- Color: Emerald Green
- Grass Height: 50mm
- Dimensions & Weight:
 - 1m x 5m / 9kg
 - 2m x 10m / 38kg

- Gauge: 5/8 inch
- Stitch Rate: 18/10cm



Artificial Green Lawn Solutions

Materials that are sustainable and purposeful; saving water, time, and money.

Comparison Between Doozer Evergreen Turf and Natural Grass

Synthetic Grass - Doozer Evergreen Turf	Natural Grass
Maintenance	
Low Maintenance: Reduces maintenance costs and time, perfect for homes with elderly, children, or pets, as well as vacation homes.	High Maintenance: Requires tools and manpower like lawnmowers and fertilizers for upkeep, consuming time and effort.
Eco-Friendly	
Environmentally Safe: No need for pesticides, fertilizers, or mowing. Safe for children, pets, and the environment.	Health Risks: Fertilizers and pesticides may pose risks to health and the environment. These chemicals can also seep into groundwater.
Watering	
No Water Needed: Ideal for areas with water shortages. Reduces costs associated with irrigation.	High Water Demand: Natural grass requires substantial watering to maintain its appearance, especially in warm climates.
Safety	
Safe Surface: Avoid muddy patches, slippery slopes, or sharp stones. Perfect for children's play areas.	Safety Concerns: Natural grass may harbor pests like mosquitoes and ants, or conceal sharp objects like stones.
Environment	
Aesthetic Appeal: Retains a green, vibrant look all year, enhancing outdoor or indoor spaces without seasonal limitations.	Seasonal Restrictions: Natural grass may become patchy or dry in harsh conditions, requiring extra care to maintain its appearance.
Durability	
Weather Resistant: Withstands various weather conditions without forming muddy patches or puddles.	Fragile: Deteriorates in harsh climates or over time, requiring frequent reseeding and repair.
Time	
Time-Saving: Easy to install and maintain, providing a long-lasting, perfect appearance.	Time-Consuming: Requires continuous care and maintenance to preserve its quality and beauty.

Conclusion

Doozer Evergreen Turf offers a durable, eco-friendly solution for lush green spaces, perfect for modern landscaping.

Applicable Synthetic Turf Solutions for Any Project

Doozer Evergreen Turf is versatile, suitable for a wide range of applications, including:

- **Sports Fields:** Football, tennis, baseball, gymnasiums, martial arts training grounds.
- **Residential Spaces:** Homes, gardens, patios, rooftops, and urban parks.
- **Public Spaces:** School playgrounds, recreational areas, scenic walls, nurseries, and even animal parks or campgrounds.

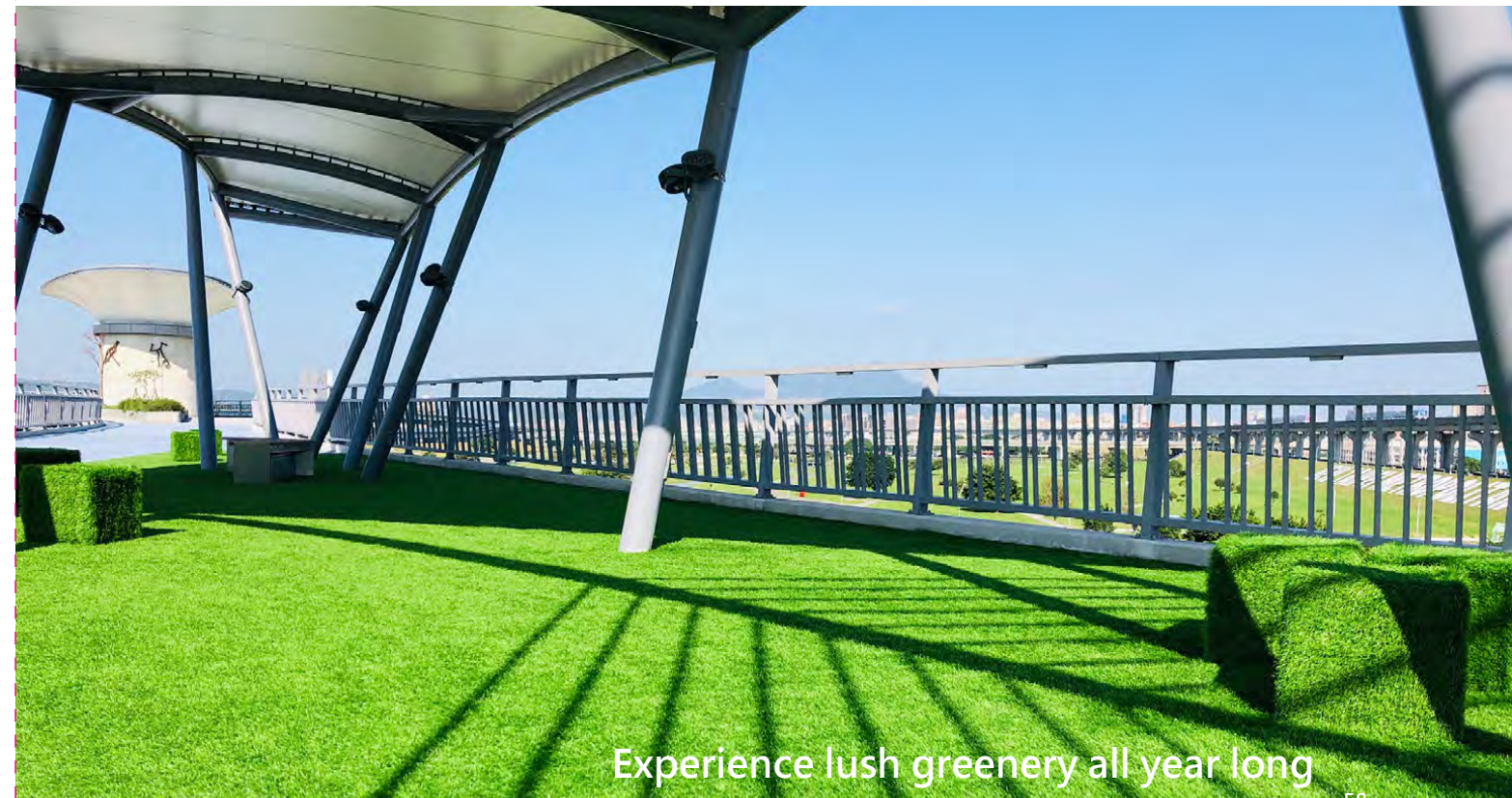
Realistic Look, Soft Touch

Our turf products not only appear remarkably natural but also feel soft to the touch. They can be securely installed on various surfaces such as floors, walls, or even ceilings.

Encouraging Creativity

We inspire our customers to explore creative uses!

The turf is highly flexible, allowing for seamless bending into unique curves or attaching to irregular surfaces. It can be applied to objects such as sofas, toys, and unconventional shapes, making it perfect for innovative designs and bold ideas.



Experience lush greenery all year long

doozer
Wood Plastic Composite



Doozer Wood Outdoor Bench Series

Enriching Every Space Around You! Outdoor Bench Series

If It Lacks Elegance, It's Just Furniture

Doozer Wood's outdoor bench series is thoughtfully designed for parks, playgrounds, schools, and public spaces. Crafted to combine durability with timeless beauty, these benches are built with innovative materials and refined aesthetics. Resistant to extreme temperatures and environmental wear, Doozer benches ensure consistent performance and appearance over time.



**OUTSTANDING
DURABILITY**



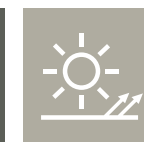
**LOW
MAINTENANCE**



**TIMBER
SUBSTITUTE**



ROT-PROOF



UV RESISTANT

Long-lasting Durability: Engineered to withstand years of use, retaining its structure and finish.

Low Maintenance: Designed to minimize upkeep costs and efforts.

Eco-Friendly Materials: Made with sustainability in mind, aligning with green initiatives.

Weather Resistant: Effectively repels moisture and prevents corrosion or damage.

Anti-UV Protection: Keeps colors vibrant and materials intact under prolonged sun exposure.

Frame Material


- High-strength galvanized steel for the base.
- Rust-resistant and coated for additional durability.
- Available in green and customized colors.


Seat Material


- High-density polyethylene (HDPE).
- Water-resistant, crack-proof, and fade-resistant under daily use.

With Doozer benches, you don't just install seating—you add value to your spaces with lasting quality and impeccable style. Durable and reliable, our benches stand the test of time, ensuring elegance in every corner.


For more details and customization options, contact us today!


	Product Model	DP-1001
	Dimensions (cm)	W150 x D61 x H75
	Bench Frame Material	Cast Aluminum
	Bench Plank Material	High-Density Polyethylene (HDPE)
Plank Color: Brown + Frame Color: Green Optional: Center armrest available upon request	Weight (kg)	43.4

	Product Model	DP-3001
	Dimensions (cm)	W150 x D61 x H75
	Bench Frame Material	Cast Aluminum
	Bench Plank Material	High-Density Polyethylene (HDPE)
Plank Color: Brown + Frame Color: Green	Weight (kg)	36.7


	Product Model	DP-5001
	Dimensions (cm)	W150 x D53 x H75
	Bench Frame Material	Cast Aluminum
	Bench Plank Material	High-Density Polyethylene (HDPE) - 90%
Plank Color: Brown + Frame Color: Red Plank Color: Grey + Frame Color: Red Plank Color: Brown + Frame Color: Green Plank Color: Grey + Frame Color: Green	Weight (kg)	75.4


This bench comes in 4 color combinations. For images or additional details, please contact our sales team.

	Product Model	DP-1002
	Dimensions (cm)	W150 x D56 x H41
	Bench Frame Material	Cast Aluminum
	Bench Plank Material	High-Density Polyethylene (HDPE)
Plank Color: Brown + Frame Color: Green	Weight (kg)	31.5


	Product Model	DP-3002
	Dimensions (cm)	W150 x D60 x H43
	Bench Frame Material	Cast Aluminum
	Bench Plank Material	High-Density Polyethylene (HDPE)
Plank Color: Brown + Frame Color: Green	Weight (kg)	35.6


	Product Model	DP-5002
	Dimensions (cm)	W150 x D39 x H41
	Bench Frame Material	Cast Iron
	Bench Plank Material	High-Density Polyethylene (HDPE) - 90%
Plank Color: Grey + Frame Color: Red	Weight (kg)	39.3

	Product Model	DP-2001
	Dimensions (cm)	W150 x D51 x H75
	Bench Frame Material	Cast Aluminum
	Bench Plank Material	High-Density Polyethylene (HDPE)
Plank Color: Brown + Frame Color: Green	Weight (kg)	39.5


	Product Model	DP-4001
	Dimensions (cm)	W150 x D60 x H75
	Bench Frame Material	Cast Aluminum
	Bench Plank Material	High-Density Polyethylene (HDPE) - 90%
Plank Color: Brown + Frame Color: Red Plank Color: Grey + Frame Color: Red Plank Color: Brown + Frame Color: Green Plank Color: Grey + Frame Color: Green	Weight (kg)	41.4


This bench comes in 4 color combinations. For images or additional details, please contact our sales team.

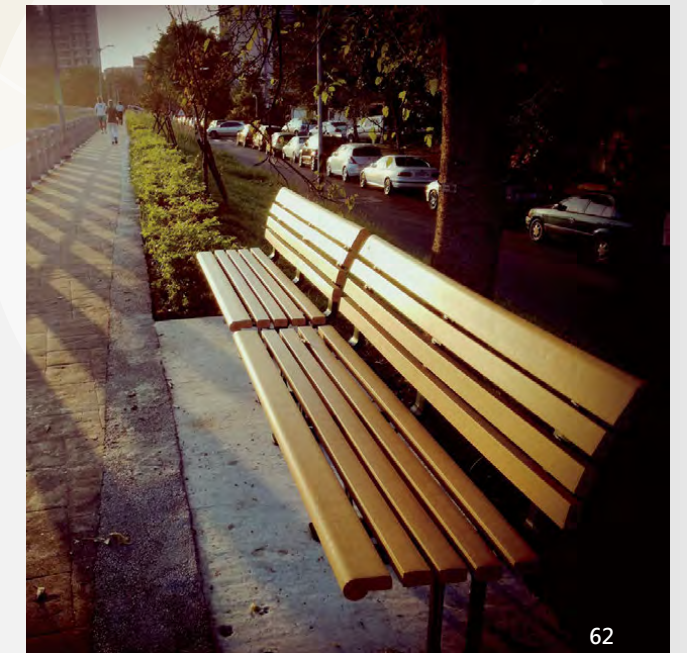
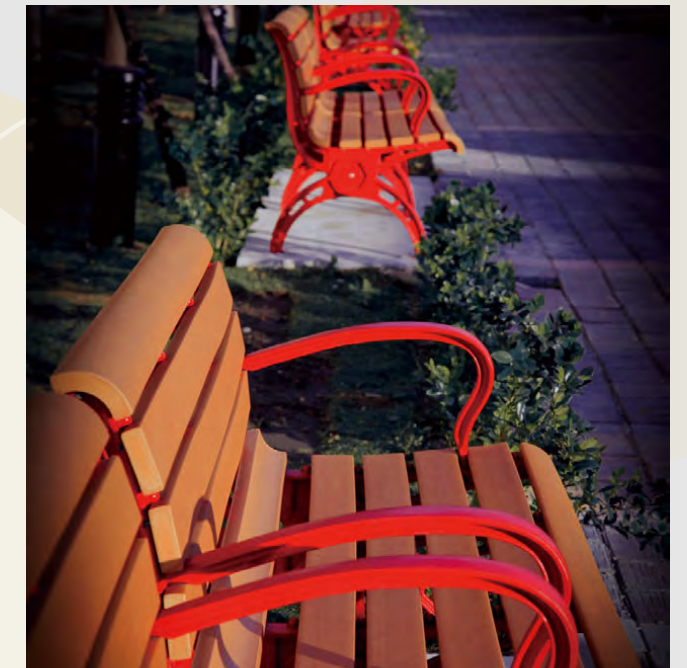
	Product Model	DP-2002
	Dimensions (cm)	W150 x D43 x H40
	Bench Frame Material	Cast Aluminum
	Bench Plank Material	High-Density Polyethylene (HDPE)
Plank Color: Brown + Frame Color: Green	Weight (kg)	23.0

	Product Model	DP-4002
	Dimensions (cm)	W150 x D58 x H39
	Bench Frame Material	Cast Aluminum
	Bench Plank Material	High-Density Polyethylene (HDPE) - 90%
Plank Color: Brown + Frame Color: Red Plank Color: Grey + Frame Color: Red	Weight (kg)	29.8

This bench comes in 2 color combinations. For images or additional details, please contact our sales team.

	Product Model	DP-6002
	Dimensions (cm)	W150 x D44 x H47
	Bench Frame Material	Cast Aluminum
	Bench Plank Material	High-Density Polyethylene (HDPE) - 90%
Plank Color: Grey + Frame Color: Red	Weight (kg)	57.6

	Product Model	DP-7002
	Dimensions (cm)	W150 x D41 x H43
	Bench Frame Material	Cast Aluminum
	Bench Plank Material	High-Density Polyethylene (HDPE) - 90%
Plank Color: Grey + Frame Color: Red	Weight (kg)	25.86





Enhanced Perspectives and Artistic Innovation Reinforced Outdoor Leisure Bench Series

Relaxation in Sight with DPS-1001 "Skyline Bench"

The DPS-1001 "Skyline Bench" is more than just a piece of outdoor furniture; it's a gateway to relaxation. With its ergonomic design and vibrant color palette, this bench elevates any outdoor setting, providing a balance of aesthetics and comfort. A single row of neatly aligned slats offers both visual harmony and sturdy support for users to fully unwind.



TRANSPORTED
BY TRUCK



TRANSPORTED
BY FORKLIFT



BLENDING
WITH NATURE



LOW
MAINTENANCE



DURABLE
CONSTRUCTION

How Do We Transform a Bench into a Life-Enhancing Experience?

A bench isn't just a seat.
It's a symbol of how everyday design can enhance life's simple pleasures.

Using advanced material processing,
we create benches that seamlessly integrate into
their surroundings while ensuring exceptional durability.
From material selection to vibrant colors,
every detail reflects our dedication to quality and sustainability.

Doozer is dedicated to enriching outdoor spaces through craftsmanship and sustainability, creating solutions that enhance the beauty of every environment.

For more details and customization options, contact us today!



Unlimited Possibilities: Redefining Outdoor Materials

Enhanced Durability for Outdoor Seating

"Design without limits, crafted with meticulous detail"—breaking boundaries of traditional concepts, Doozer's Enhanced Series Outdoor Benches elevate material excellence, refined craftsmanship, and design aesthetics.

By enhancing structural integrity and durability, these benches do more than serve a functional purpose—they embody innovation and seamlessly blend with outdoor environments to create an artistic fusion of life and beauty.

Doozer believes this is not just a technical challenge but also an upgrade to modern lifestyles, providing a new perspective of elegance and refined functionality.

Product Model	DP-1001 (HDPE)	DPS-1001 (WPC)
Product Image		
Color Comparison	[Forest Green] Plank Color: Brown + Frame Color: Green This color is commonly seen in parks, playgrounds, and outdoor spaces, as it blends effortlessly with natural green landscapes. The warm, earthy tone creates a comfortable and harmonious atmosphere, enhancing the visual appeal of any setting without feeling out of place.	[Skyline Bench] Plank Color: Grey Blue + Frame Color: Green A unique color palette with a deep, textured feel. The muted earthy gray tone symbolizes strength and stability, while the cool sky blue accent adds a calming and soothing touch. Together, this combination evokes a sense of serenity and relaxation, making it perfect for creating peaceful and harmonious spaces.
Dimensions (cm)	W150 x D61 x H75	W150 x D61 x H75
Bench Frame Material	Cast Aluminum Frame The bench frame is made of cast aluminum, a durable material that resists rust and corrosion, ensuring long-lasting performance even in outdoor environments. Powder Coating Finish The powder coating process complies with environmental regulations by minimizing volatile organic compounds (VOCs) released into the atmosphere, reducing environmental impact. Superior Protection Compared to traditional liquid coatings, powder coatings provide superior protection to surfaces. For example, bicycle frames and car alloy wheels are commonly finished with powder coatings. These items endure constant exposure to sunlight, rain, and physical impact, which is why manufacturers prioritize powder coating for enhanced durability and resilience.	
Bench Plank Material	High-Density Polyethylene (HDPE) A versatile, non-toxic thermoplastic polymer.	Core: Non-toxic PE plastic + FSC-certified wood fibers Outer Layer: High-density molecular protective coating
Center Armrest	V	V
Weight (kg)	52	85
Transportation Method	Easily handled by one person	Suitable for two-person carrying or forklift transport
Price	Please contact our sales team for assistance	



doozer
Wood Plastic Composite

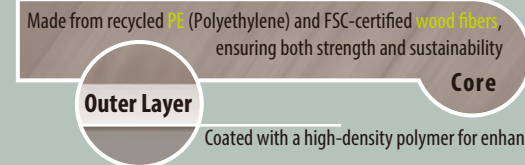
Dialogue with Materials: Understanding the Essence of Doozer Benches

When choosing outdoor furniture, it's essential to look beyond appearances and focus on the quality of materials. The "Reinforced Bench Series" by Doozer showcases unique strength and style, ensuring that each bench tells a story through its design and durability.

Enhanced Protective Layer

The surface features a high-density molecular shield that provides superior protection against wear and environmental factors, greatly extending the product's lifespan.

This combination results in a bench that is resilient to the elements and maintains its appearance for years to come.



Co-Extrusion Technology

The outer layer fuses directly with the core, boosting strength and durability without adhesives. No peeling, no cracking—just lasting performance.

- Key Feature: No peeling or cracking over time.
- Advantage: Stronger structure, less maintenance.

Blade-Cut Textured Surface

The new finish combines natural wood-inspired textures with modern aesthetics. More than just decoration, the textured surface enhances grip and comfort, making Doozer benches ideal for outdoor spaces.



By combining style, functionality, and sustainability, Doozer's reinforced benches are more than just seating solutions—they are a reflection of quality craftsmanship designed to enhance your outdoor spaces for years to come.

doozer
Wood Plastic Composite

Doozer Wood Outdoor Bench Series

Refined Outdoor Seating for a Harmonious Space

Doozer Wood Plastic Composite Bench Series

Tailored Outdoor Seating for Any Space

Designed to blend seamlessly with any environment, the Plastic Wood Bench Series offers customizable sizes and placements, enhancing both indoor and outdoor spaces with style and function.



A New Perspective: Where Design Meets Function

A bench is more than a seat—
it transforms everyday spaces into something extraordinary.

Our benches are crafted to blend seamlessly with surrounding environments while providing practical utility.

With four surface textures and four elegant color variations, the design allows for extensive customization to suit diverse aesthetics and preferences.

Each bench is more than just a seat —
it represents a thoughtful design approach that balances form and function.

At Doozer, we believe that every space deserves more than just a functional product; it deserves an experience that enhances its surroundings.

Our benches go beyond expectations,
offering a lasting impression of quality and style in any setting.

Boundless choices and attention to detail—without aesthetics, it's merely an object.

The Interwoven Design of a Chair | 4 Surface Materials × 4 Chair Styles





International Market

Doozer Wood is a premium and innovative **WPC (Wood Plastic Composite)** brand. We were pioneers in adopting multi-channel strategies, gaining international recognition early on. Today, we have established strong competitiveness in numerous global markets.

At Doozer, we are dedicated to **manufacturing excellence, customer success, and brand management**. Our key collaboration regions include **Europe (e.g., the United Kingdom), Australia, and Japan**. Additionally, we have expanded our business operations into Southeast Asia (e.g., the Philippines, Vietnam, and Thailand), as well as the South Pacific Islands (e.g., Guam, Saipan, Palau, and New Caledonia). Our presence also extends to Iran, Brazil, and various Middle Eastern countries such as Egypt and Israel.



 Brunei



 Australia



 United Kingdom (UK)



 United Kingdom (UK)



 Iran



Palau



United Kingdom (UK)



Costa Rica



Australia



Australia



Australia



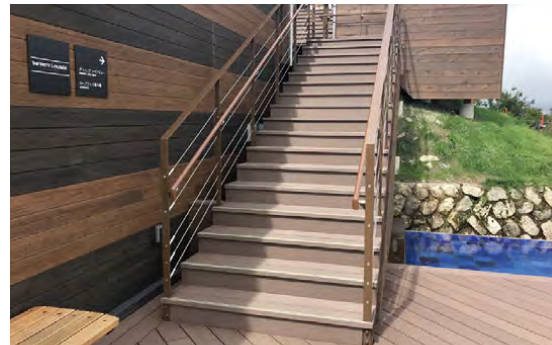
Australia



United Kingdom (UK)

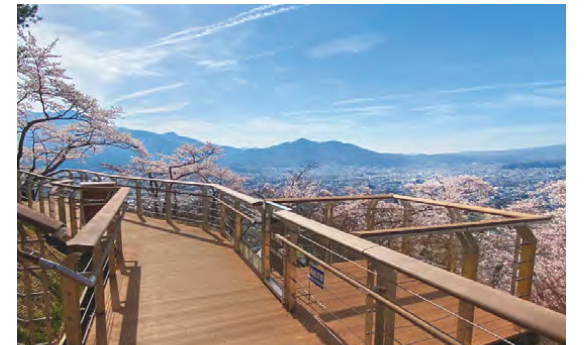


● Japan | 滋賀県大津市 | 琵琶湖テラス国定公園 | 琵琶湖地域で最も人気のある建築「琵琶湖テラス」
 Japan | Ōtsu, Shiga Prefecture | Biwako Terrace National Park | The Most Popular Architectural Landmark in the Biwako Region: Biwako Terrace



● Japan | 山梨県富士吉田市 | 新倉山浅間公園展望台 | 日本唯一の景観を守るまちづくり「富士山河口湖」の必訪スポット

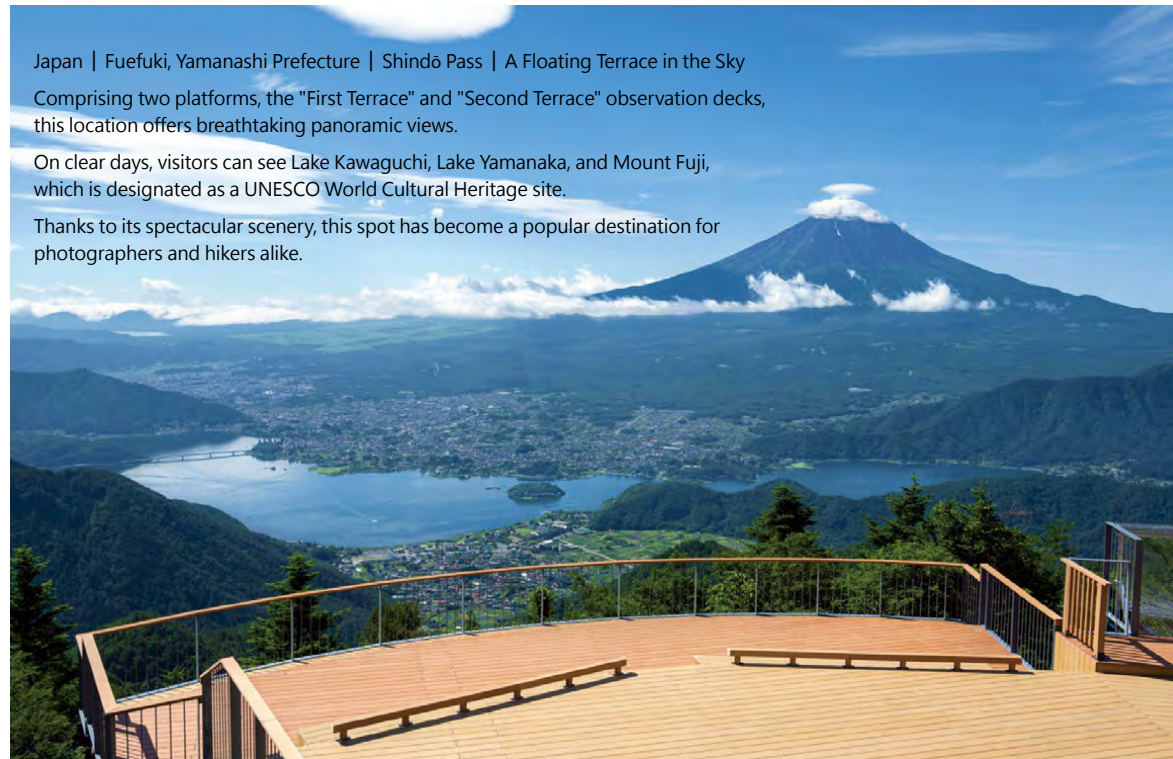
Japan | Fujiyoshida, Yamanashi Prefecture |
 Arakurayama Sengen Park Observation Deck |
 A Must-Visit Spot in "Mt. Fuji & Lake Kawaguchi,"
 Preserving Japan's Unique Scenic Beauty.



 **YouTube** << Project Showcase

新倉山浅間公園展望デッキ@山梨県富士吉田市

Arakurayama Sengen Park Observation Deck @ Fujiyoshida, Yamanashi Prefecture, Japan



Japan | Fuefuki, Yamanashi Prefecture | Shindō Pass | A Floating Terrace in the Sky
 Comprising two platforms, the "First Terrace" and "Second Terrace" observation decks, this location offers breathtaking panoramic views.
 On clear days, visitors can see Lake Kawaguchi, Lake Yamanaka, and Mount Fuji, which is designated as a UNESCO World Cultural Heritage site.
 Thanks to its spectacular scenery, this spot has become a popular destination for photographers and hikers alike.

● 日本 | 山梨県笛吹市 | 新道峠 | 空中に浮かぶテラス



 **YouTube** << Project Showcase
 天空に浮かぶテラス～新道峠 FUJIYAMA ツインテラス～
 A Floating Terrace in the Sky ~ Shindō Pass FUJIYAMA Twin Terrace ~

 **YouTube** << Project Showcase
 新道峠 FUJIYAMA ツインテラス 2021 年夏、OPEN !
 Shindō Pass FUJIYAMA Twin Terrace – Opening in Summer 2021!



● 日本 | 兵庫県 | 六甲山記念碑台展望デッキ
 Japan | Rokkō Mountain Commemorative Monument Observatory Deck



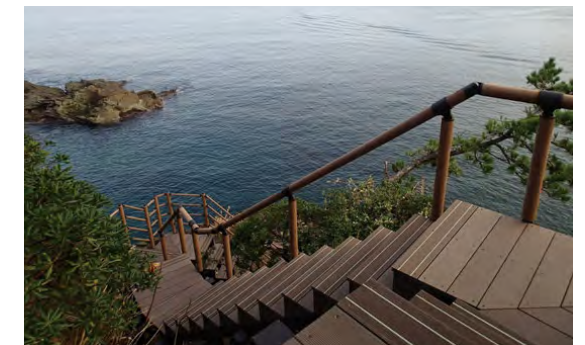
● 日本 | 東京都 | 東京港野鳥公園
 Japan | Tokyo Metropolis | Tokyo Port Wild Bird Park



● 日本 | 長野県 | 乗鞍BASE
 Japan | Nagano Prefecture | Norikura BASE



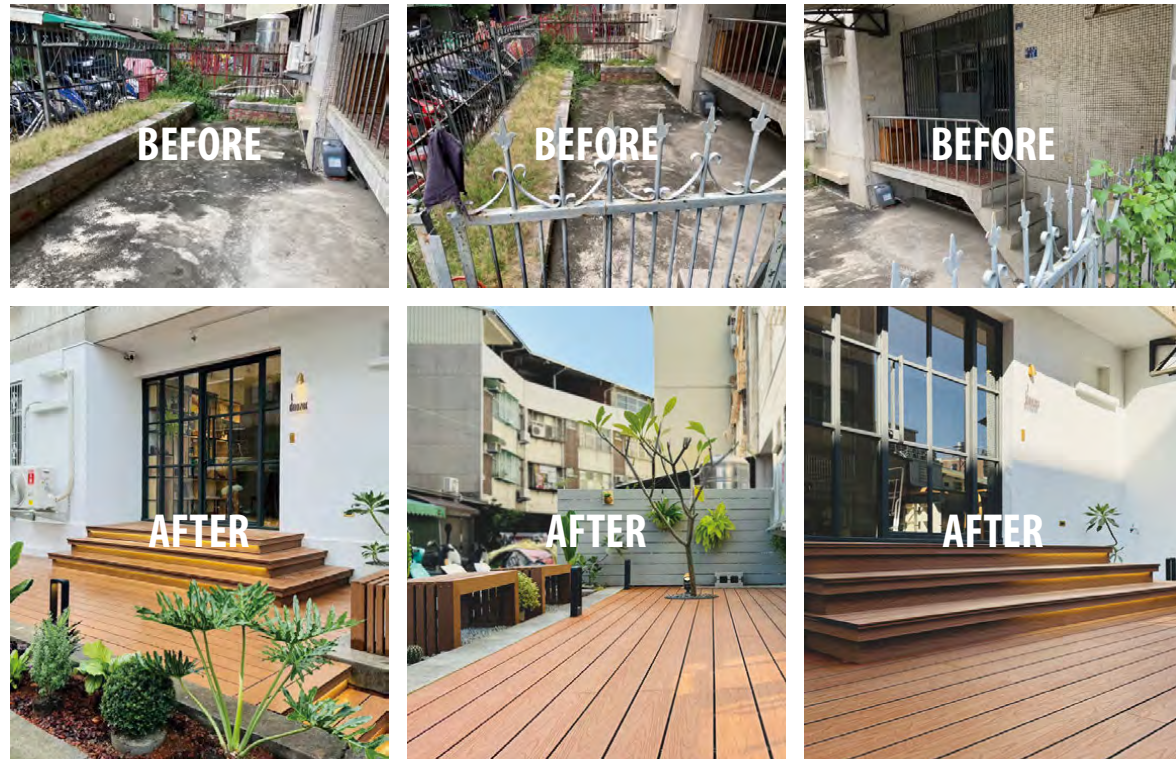
● 日本 | 千葉県 | 国分川調整池緑地
 Japan | Chiba Prefecture | Kokubun River Retention Basin Green Space



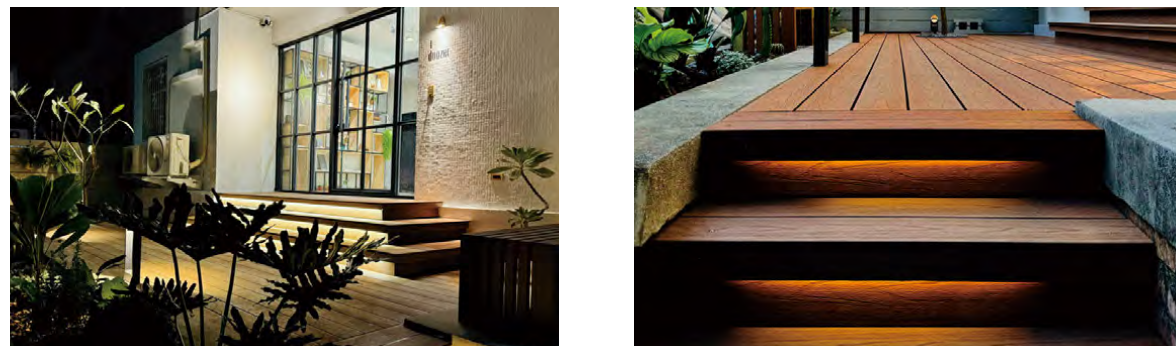
● 日本 | 島根県 | 大山隠岐国立公園浄土ヶ浦
 Japan | Shimane Prefecture | Daisen-Oki National Park Jōdogaura



● 日本 | 東京都 | 芹ヶ谷公園
 Japan | Tokyo Metropolis | Serigaya Park



doozer With meticulously designed lighting and abundant greenery, Doozer can create the most breathtaking outdoor courtyard for you.

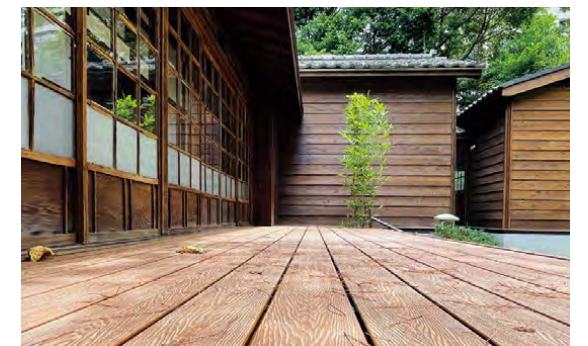


doozer Doozer Wood blends seamlessly with a century-old historic building, inviting you to sit or stand and immerse yourself in the timeless ambiance that lingers in the air.

The natural wood grain of the Doozer Wood series, the cool touch of stone, and the rustic charm of pine all tell the story of this place.

Here, a sense of comfort and tranquility lingers in the air. The chirping of birds, the fragrance of flowers and grass, and the gentle caress of the breeze create a soothing symphony of nature.

Whether day or night, this space remains an ideal retreat for relaxation and embracing life's beautiful moments.





doozer On a crisp autumn afternoon, the wooden pathway in the park quietly winds its way through a carpet of fallen leaves, guiding visitors along a trail where every step treads upon golden-hued memories.



The Doozer Classic Series showcases a distinctive brushed texture, crafted through traditional woodworking techniques to create a simple yet inviting atmosphere.

Here, the dancing shadows of trees weave seamlessly with the sky, forming a natural masterpiece. Immerse yourself in a relaxing and joyful ambiance, where cherished moments with loved ones unfold effortlessly.

Whether basking in the soft glow of the morning sun or beneath a canopy of shimmering stars, this space offers pure delight and happiness.

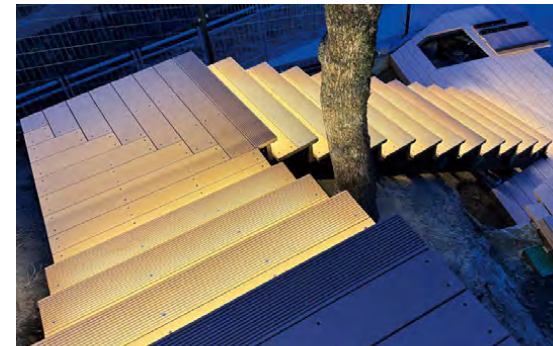
[Contact us today.](#) and let Doozer help you create a space that blends aesthetics with functionality while maintaining harmony between nature and design.



doozer In this tranquil corner, let your home be a sunlit green ark.



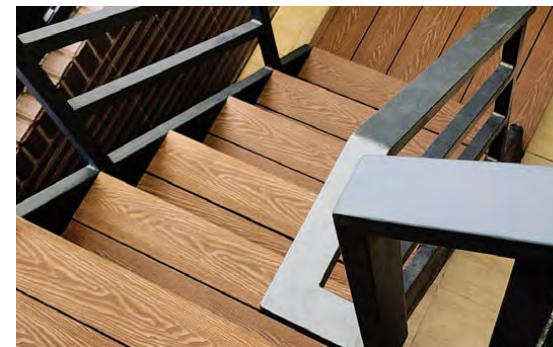
doozer In this green haven, enjoy beauty, space, and harmony.



doozer Only at night does the light reveal every detail.



doozer A simple pavilion seat—where your story begins.



doozer Warm wooden stairs—steady and comforting.



doozer You can create a space with character, not just a garden.



doozer Doozer Wood creates a fully integrated luxury pet park, designed with dogs at its heart.



doozer A wooden bench is more than a place to rest—it's a platform for shared moments. Here, connections are made, and your own corner of happiness awaits.

Eco-Friendly WPC in Creative Installation Art

Integrating Doozer's eco-friendly WPC into creative installations unlocks endless possibilities. Our durable, versatile, and sustainable materials bring artistic visions to life, blending creativity with environmental consciousness.

By merging diverse materials and forms, these installations offer a unique sensory experience, showcasing the harmony of art and sustainability. Let Doozer help transform spaces into captivating and inspiring environments.





doozer At dawn, the door opens to hope and new beginnings. At dusk, it closes, embracing you with the warmth of home.



Revitalizing the Entrance with Doozer Wood

At the entrance, we preserved the original ironwork while replacing the timeworn, decayed wooden trim with Doozer Wood eco-friendly WPC, breathing new life and energy into the space.

The fence frame features a CNC-crafted louver-style design, ensuring both privacy and optimal airflow.

As the gate and fence come together, they create a warm and harmonious atmosphere—not just a refreshed appearance, but a true symbol of home's safety and comfort.



doozer A warm-toned wall, gently veiling the city's gray.



doozer A stylish wooden fence, blending elegance with privacy.



doozer A ventilated enclosure for utility rooms, and water towers.



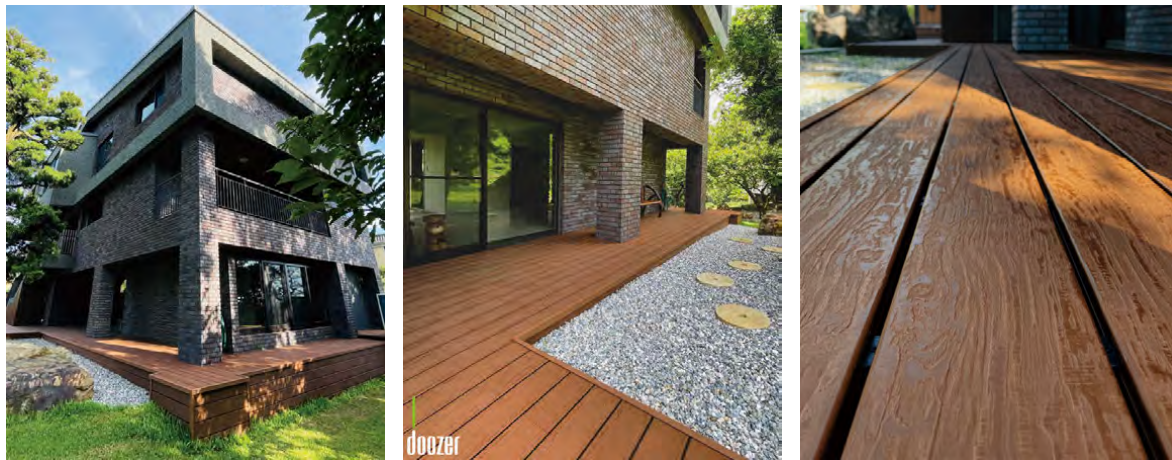
doozer A green workspace uniting nature and modernity.



doozer A pet-friendly, child-safe, and home-enriching space.



doozer A sturdy, elegant wooden gate that opens the space.



doozer Seasons pass, yet every window frames a painting, every light and shadow a verse in time.



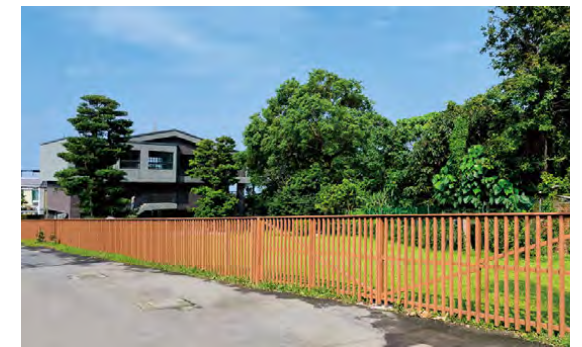
doozer Seeking a space that feels like a vacation at home? Doozer Wood offers the perfect solution.

Doozer Eco-Friendly WPC Series

Combining natural elegance with weather resistance and easy maintenance, the Doozer Eco-Friendly WPC Series is the perfect addition to any outdoor terrace, garden, or decorative space.

Seamlessly blending into your home, it creates a relaxing, vacation-like ambiance—whether for family gatherings, quiet reading moments, or simply enjoying music in solitude.

With Doozer Wood, the comfort of a retreat is always within reach.





doozer Dance with Doozer's elegance, embracing a pure and simple life—surrounded by greenery with wooden decks, screens, storage cabinets, and enclosure boxes.

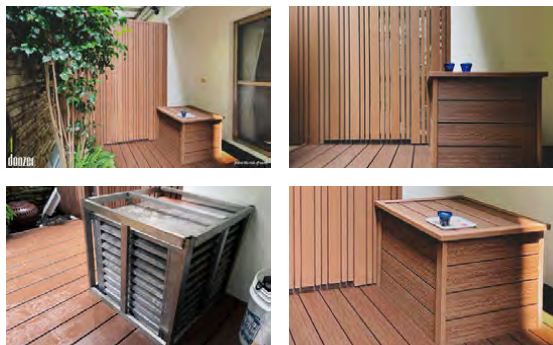
Doozer – Where Function Meets Beauty in Outdoor Spaces

Looking for an outdoor space solution that blends practicality and aesthetics? Doozer has the perfect answer.

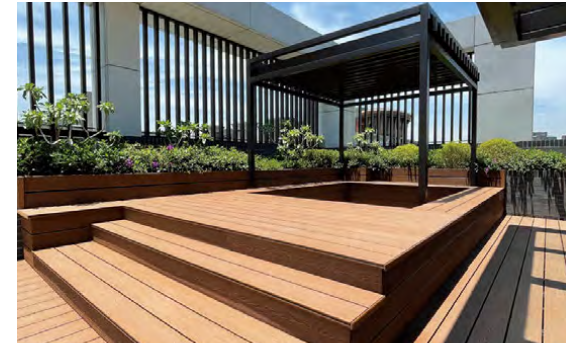
Our wooden decks, screens, storage cabinets, and enclosure boxes are designed to be your ideal choice—a serene retreat where weary souls find rest.

The natural wood grain and rich brown tones harmonize with the surrounding greenery, creating a tranquil sanctuary. Listen to the whisper of the wind, savor a quiet coffee moment, and embrace the beauty of life's simplest pleasures.

With Doozer, every moment becomes an elegant dance with nature.



doozer An urban oasis, where noise fades into a sky garden.



doozer Sunlight through the lattice casts wood-like shadows.



doozer Life needs a touch of color—refined gray is just right.



doozer With sky and Doozer Wood, a vibrant space unfolds.



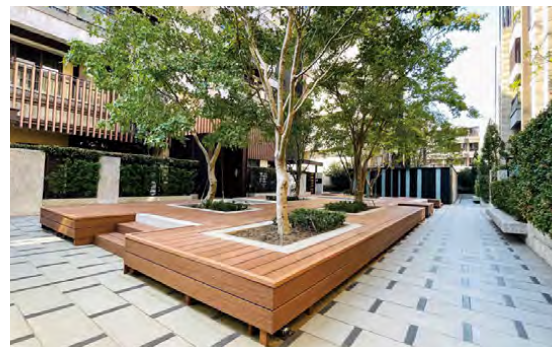
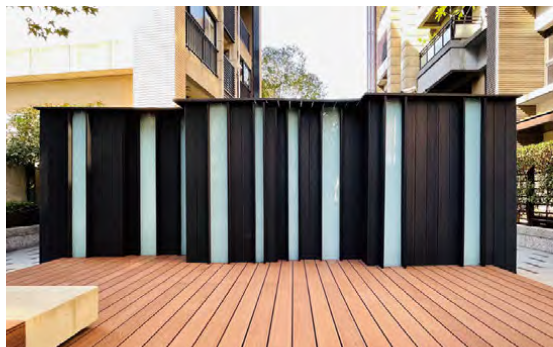
doozer With craftsmanship, we shape unique wooden platforms.



doozer Decorate building exteriors with WPC for a uniquely look.



doozer Doozer Wood is more than decoration—it is the soul of this space, where every moment lingers with poetic life.



doozer Here, there is no city noise, only the whispers of leaves and wind. Listen closely—every wood grain tells the story of Doozer's commitment to quality.

A Sanctuary Beyond Rest

This is more than a place to rest—it is a quiet corner where one finds harmony with time and reconnects with oneself.

Here, the warmth of wood and the vitality of trees weave a silent hymn of nature.

Doozer's Classic Series shapes the foundation with timeless simplicity, while the flooring, crafted from the Natural Wood Grain / Enhanced Series, offers refined texture and enduring strength.

Each Doozer eco-friendly WPC plank carries a deep respect for nature, preserving its beauty while standing the test of time.





Can I Request a Sample?

Yes! You can request a free Doozer product sample through multiple channels.

Simply reach out to us using the contact information below, and let us know your needs. We're here to provide helpful insights and support.

If you have any questions about our products, we're happy to assist and offer solutions.

How to Contact Us?

Contact: +886 2 2585 3884

Service email: service@doozer.com.tw



Website



FB



doozer.Taiwan